



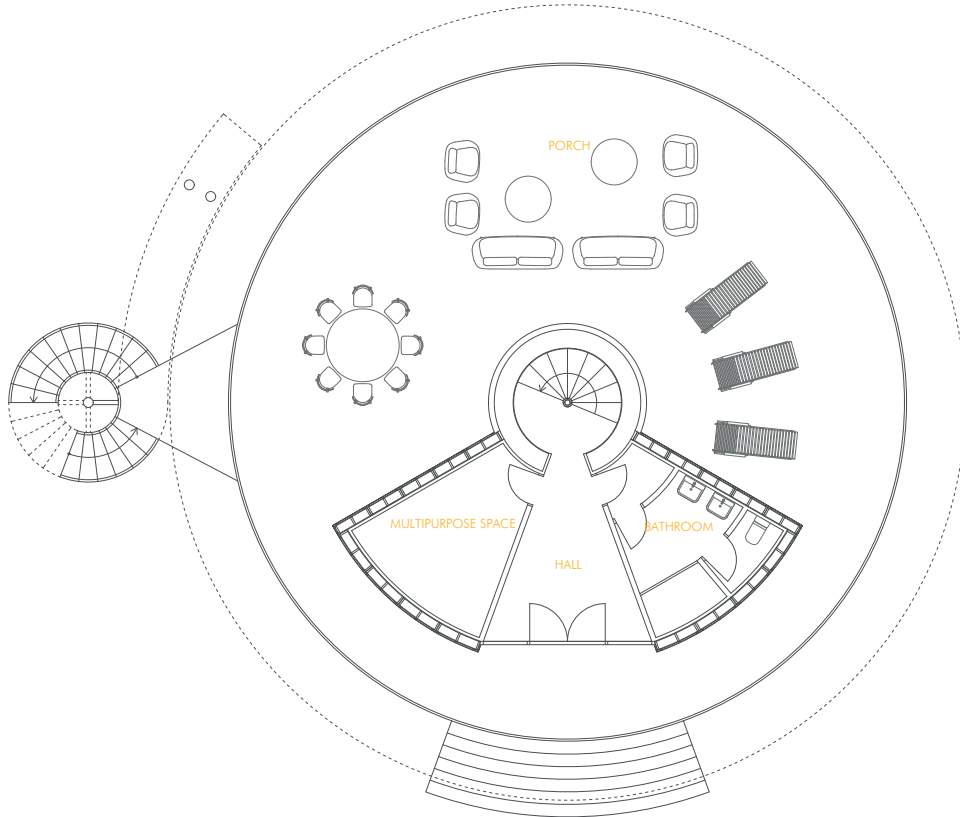
# SH 360

Specifications

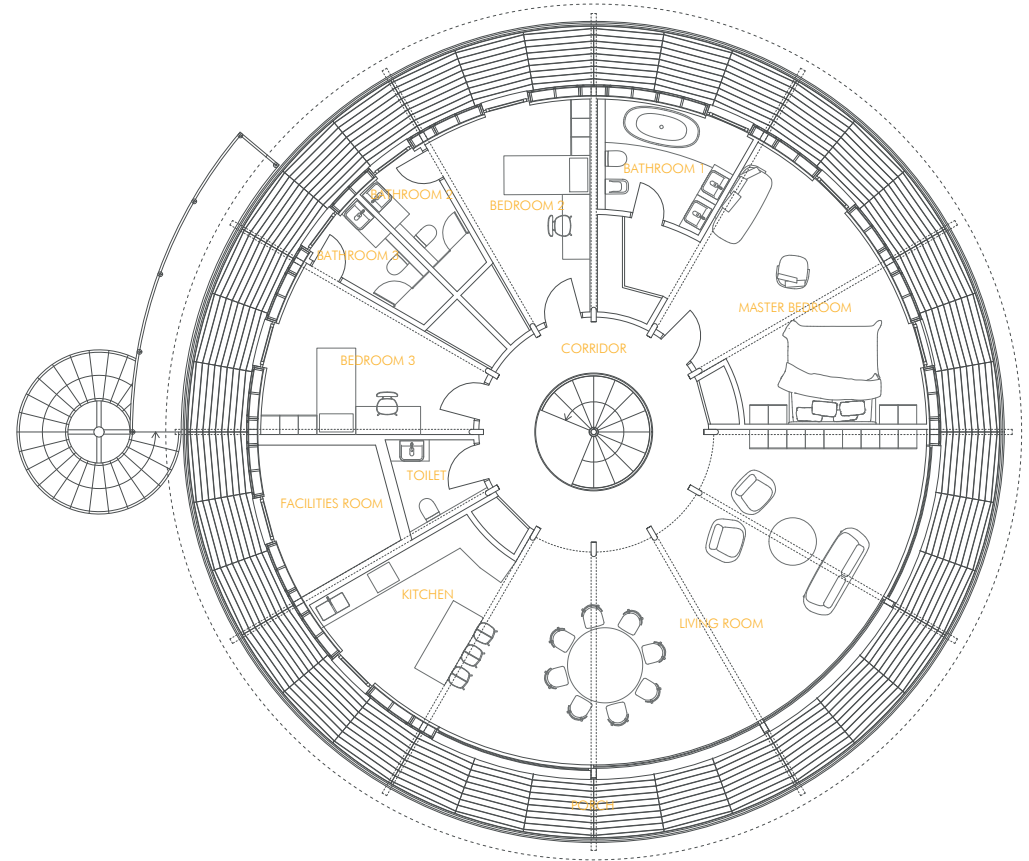


# FEATURES

## FIRST FLOOR



## SECOND FLOOR



Constructed Area: 359 m<sup>2</sup> / Useful Floor Area: 216.70 m<sup>2</sup> (1<sup>st</sup> Floor: 37.50 + 2<sup>nd</sup> Floor: 179.20) / Porch: 236 m<sup>2</sup>

\*Showing 3-Bedroom Model (More Arrangements Available: 1 Bedroom, 2 Bedrooms)

# CONTENTS

## HOUSE PACK

Rotating Platform.....	4
Structure.....	5
Cladding.....	6
Windows and Doors.....	8
Flooring.....	14
Staircases.....	15
SH360° Application.....	17

## INTERIOR PACK

Flooring.....	18
Interior Walls.....	19
Ceilings.....	20
Tiling.....	21
Bathrooms.....	23
Closets.....	30
Doors.....	31
Electric Installations.....	32
Heating & Cooling.....	35
Smart Home Automation.....	36
Renewable Energy.....	38

## ROTATING PLATFORM



Reinforced Concrete Platform  
S355J2G3 Laminated Steel Rotatory Ring

The inner rotating ring is placed on the central structure, which is built on the main terrace and made of reinforced concrete.

Two engines attached to the ring enable the rotatory movement.

### Location

Structure

---

### Features

#### RING

Material: S355J2G3 Laminated Steel

Diametre (m): 3.50

#### ENGINES

Output speed (RPM): 0.80

Engine power (KW): 2.20

### Materials

#### Laminated Steel



#### Concrete



## STRUCTURE

Steel and Wooden Profiles Structure  
Sandwich Panels Facade and Floors

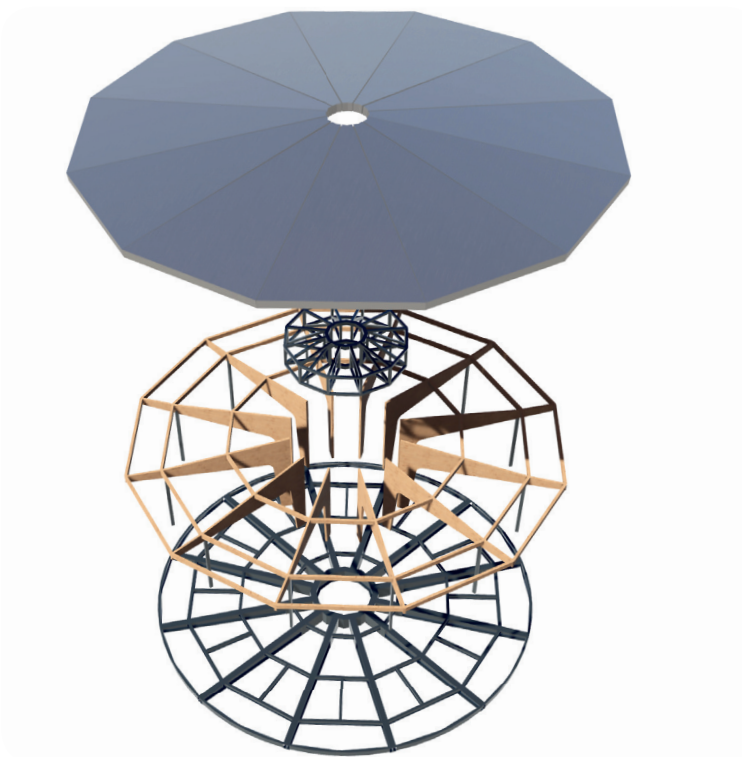
The main structure of the house is made of steel profiles.  
Wooden profiles, attached by a steel truss, are placed on the main structure.

Facade and floors are sandwich panels, they are composed of OSB-3 boards on both sides and a 140-mm width conifer wood net, then filled with Alpharock 140-mm mineral wool. All the group coated on Delta Fassade waterproof layers.

They are excellent acoustic and thermal insulation systems which combine two natural elements such as wood and mineral wool.

### Location

Facade and floors



### Features

Type Of Wood: Conifer C16/C24  
Wood Section (mm): 140 x 45  
Insulation: ALPHAROCK Mineral Wool  
Double OSB: 12 mm+12 mm/12 mm+18 mm

### Finish



### Insulation



## EXTERIOR CLADDING



STACBOND® composite panels  
Aluminum Ventilated Facade

StacBond®PE panels are composed of thermoplastic resins (low density polyethylene). It has excellent mechanical properties, high degree of sound insulation, high rigidity, low weigh and it is impact resistant. Thanks to these characteristics, its applications are numerous.

Location  
Facade



### Features

Thickness Of Aluminum (mm): 0.5  
Panel Thickness (mm): 4  
Panel Width (mm): 1000 / 1250 / 1500  
Panel Length (mm): 3000 / 4000 / 5000

### Options

#### Wide Range of Finishes



PUNZONADO / PUNCHING / POINÇONNÉ



TROQUELADO / DIE CUTTING/ DÉCOUPÉ



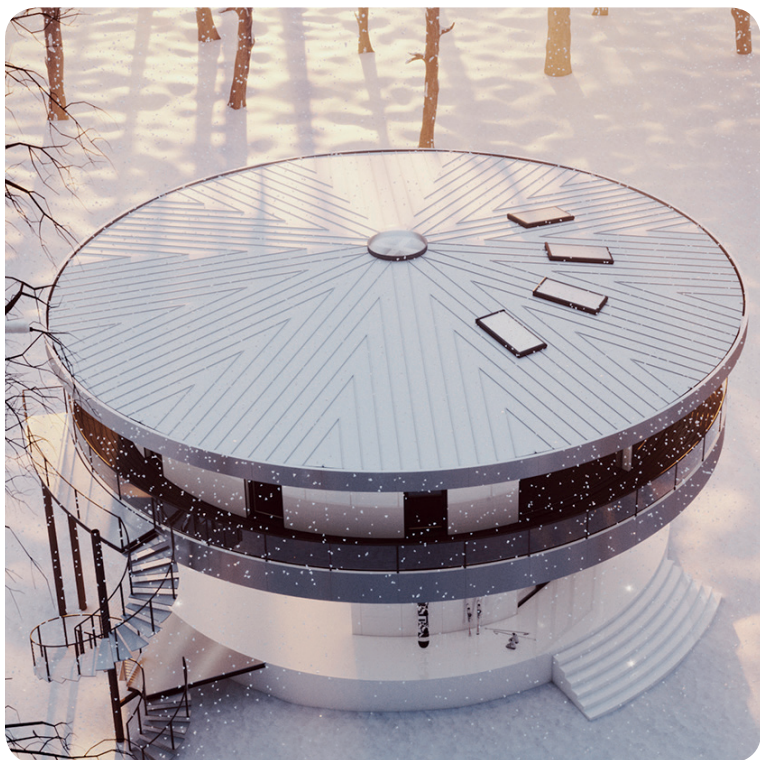
FRESADO / MILLING / FRAISÉ



CURVADO / CURVED / COURBÉ

#### Durandar Color Range





## ROOF CLADDING

VMZinc  
Zinc Roof

A phosphate treatment on the zinc surface gives it its protective patina. This pre-patinated procedure gives the zinc a patinated look from the beginning, respecting the environment.

Location  
Roof



### Features

Zinc thickness (mm): 0.6  
Panel thickness (mm): 4

### Finishes

Natural zinc



Quartz-zinc



Anthra-zinc





# WINDOWS AND DOORS

Schüco®  
AWS 50  
Tilt-and-turn Windows

The design of Schüco® systems goes back to basics. The new generation of AWS (Aluminum Window System) windows is a system created for all types of architectural, creative and functional needs, achieving a particularly elegant aesthetic.

Comfort and energy savings from the first moment.

Quantity: 8

Location  
First Floor Windows

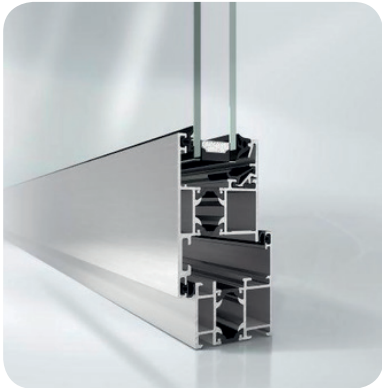


### Features

- ALUMINUM
- Measurements (mm): 2770 x 1050
- Sheet Section (mm): 81,5 x 70
- Frame Section (mm): 77,5 x 90
- Special Exterior Varnish Finish: RAL Oxidon Sable

### Model

AWS 50



## WINDOWS AND DOORS



Schüco®  
ASS 43/48  
Lift-and-slide Door

The lift-and-slide doors of the Schüco ASS 43/48 system allow large opening areas (three tracks allow large openings widths 2/3 the size of the unit) without taking up too much space since the leaves move at the same level. The lift-and-slide system is perfectly weather-tight, providing excellent thermal insulation and sound reduction.

Lift-and-slide doors can be customized according to the customer's wishes.

The surface finishings of Schüco systems, whether anodized or lacquered, meet the most demanding quality standards. A wide range of colors and textures are available for both indoor and outdoor use.

Quantity: 2

Location  
1st Floor Windows



### Features

#### ALUMINUM

One Fixed Panel and Another Curved Lift-and-slide panel

Channel Breakage: 4 points ASS Closure Mechanism

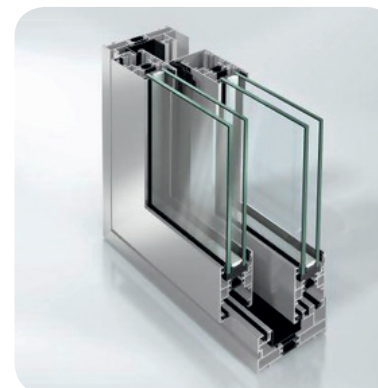
Solar Control: Guardian Sun 6+6-12-6+6

Fixed Panel (mm): 3730 x 2690 (radius 7,83m)

Lift-and-slide Panel (mm): 4130 x 2690 (radius 7,78m)

### Model

Schüco ASS 43/48



# WINDOWS AND DOORS



Schüco®  
AWS 50  
Exterior Door

The design of Schüco® systems goes back to basics. The new generation of AWS (Aluminum Window System) windows is a system created for all types of architectural, creative and functional needs, achieving a particularly elegant aesthetic.

Comfort and energy savings from the first moment.

Quantity: 1

Location  
First Floor Entrance Door

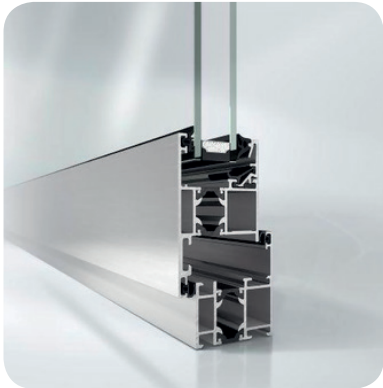


### Features

- ALUMINUM
- 4-sheet window
- Measurements (mm): 4150 x 2600
- Two Fixed and Two Hinged Doors, with Channel Breakage
- Solar Control: Guardian Sun 6+6-12-6+6.
- Color: Special Varnish

### Model

Shüco AWS 50



# WINDOWS AND DOORS



Ceplelux®  
Motorized Skylight

It is a ventilation and lighting system. Specially indicated for living rooms, offices, stairwells... when you are seeking maximum comfort.  
The frame is made in galvanized steel sheet to provide a satisfactory solution to fireproofing requirements on specific buildings.

Quantity: 4

Location  
Roof



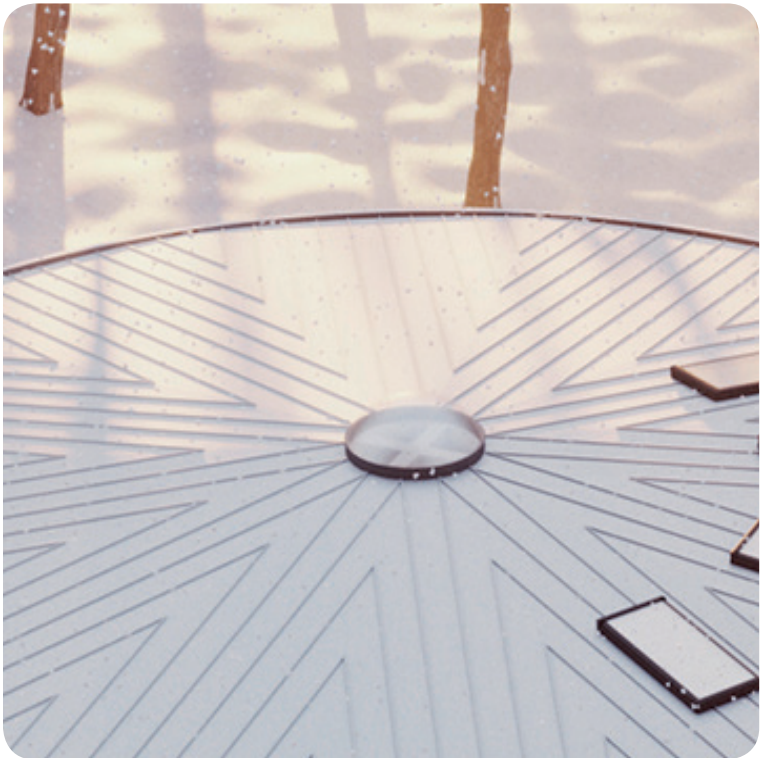
## Features

Material: Aluminum  
Motorized  
Measurements (mm): 1380 x 3600

FRAME  
Material: Galvanized Steel Sheet  
Shape: Rectangular

## Model





## WINDOWS AND DOORS

Schüco®  
AWS 50  
Circular Skylight

The surface finish of the Schüco systems, either anodized or lacquered, are endorsed by the most demanding quality seals. There is a wide range of colours and textures and the possibility of offering different interior and exterior finishes.

Quantity: 1

Location  
Centre of the roof

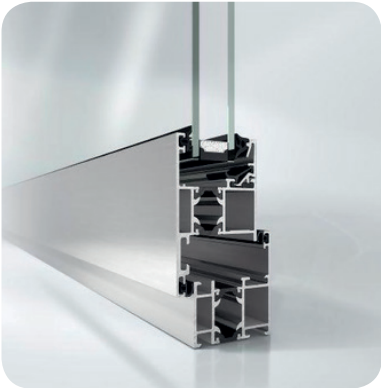


### Features

ALUMINUM  
Diametre (m): 1.64  
Solar Control: Guardian Sun 6-12-6+6  
Colour: Special Varnish

### Model

Shüco AWS 50





## OUTDOOR FLOOR

Deckor  
Technological Wood Floor

Deckor tech-wood is a microcomposite consisting of 65% premium wood fibers and 35% high-density polyethylene (HDPE) particles.

Deckor does not contain VOC's (Volatile Organic Compounds), formaldehyde, glues, PVC, heavy metals, or products that are hazardous to health.

Deckor tech-wood products are 100% recyclable at the end of their useful life, and the process of their preparation is clean, does not pollute, and consumes little energy. The wood is of certified origin (PEFC) and comes from the cleaning of European forests - no trees are cut for the manufacture of these products.

Location  
2nd floor terrace



### Features

- Measurements (mm): 150 x 21 x 2200
- Density (kg/m<sup>3</sup>): 1200
- 20-year Warranty
- Resistance To Termites
- Resistance To Water And Humidity
- Brinell Hardness Resistance
- Non-slip

### Finishes

Lisa Bicolor Deckor



Deckor Wood Grain



## CENTRAL STAIRCASE



### Central Spiral Staircase

The staircase is made of a 200mm stainless steel tube that serves as the main axis with 4mm wooden steps attached to stainless steel supports.

A 2-mm wide spiral wraps around the outer edge of the steps and also has tubular stainless steel interior handrails.

### Location

Central Staircase (From 1<sup>st</sup> to 2<sup>nd</sup> floor)

### Features

#### STAIRCASE

Height: 3.50 m  
Diametre: 1.20 m

#### STEPS

N° of steps: 18

#### SPIRAL

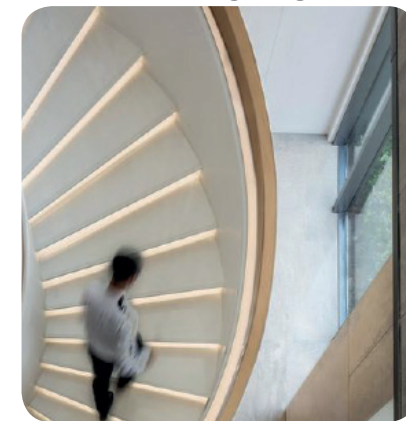
Material: Steel  
Width: 2 mm  
Tubular interior handrails

### Options

#### Multiple finishes



#### LED lighting



## EXTERIOR STAIRCASE



### Exterior Spiral Staircase

The staircase is made of stainless steel built around a 219.1 mm stainless steel tube that serves as the main axis with perforated metal mesh steps.

4 tubular profiles (orthogonal to each other) start in the main axis. The curved steel profile that composes the staircase anchors to the end of these 4 tubular profiles.

3-cm-diameter curved circular tubular profiles form the handrail. The main one is built 90 cm high from the path of the steps and then three 1-cm-diameter lower lines below.

### Location

Exterior Staircase

### Features

#### STAIRCASE

Height (m): 5.60  
Diameter (m): 3.00  
Circular handrail

#### STEPS

N° of Steps: 30  
N° of Landings: 2

#### CENTRAL TUBE

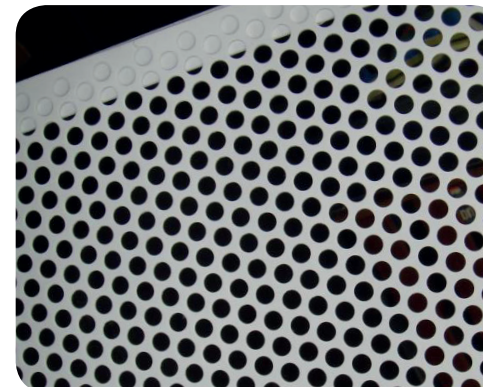
Material: Steel  
Thickness (mm): 10

### Finishes

#### Tubular Profiles Handrail



#### Perforated Metal Mesh Steps



## SH360° APPLICATION



All our rotating houses and platforms come with our SH360° Mobile app.

Ergonomic and astonishingly easy to use, it allows you to activate the two economic electric motors controlling the rotation of the house.

In particular, the user can select to have a pre-programmed view, to have one particular room automatically follow the sun, or to have the house stay in its optimal orientation to save energy.

A useful and truly intuitive app!



ECO

This mode is designed to save the maximum amount of energy. The house rotates automatically in order to obtain the maximum or minimum amount of heat capture.



EGO

A room determined by the customer follows the path of the sun, receiving sunlight throughout the day.



ONE

A room determined by the customer is based on a previously programmed view.



MAN

This manual mode allows the user to control both the speed and direction of rotation, without any limitation on the number of rotations.



## INDOOR WOODEN FLOOR



QuickStep® Impressive  
Laminated Floors

Quick-Step® Impressive is a fantastic collection of laminated floors. Natural looking, they offer an exceptional feel. The authentic grain of the panels are perfectly blended at the joints. It is not only aesthetic: it is also the most water-resistant ever made, thanks to the unique water-repellent HydroSeal coating.

The top layer features patented Scratch Guard technology, which gives this laminate flooring the highest level of protection from falling objects, stiletto heels, and other sharp objects. Even lit cigarettes falling on your floor cannot damage the ultra-resistant top layer.

### Location

First Floor and Second Floor Interiors

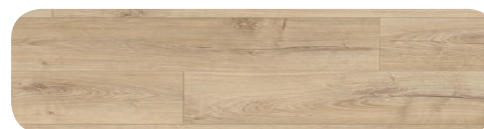


### Features

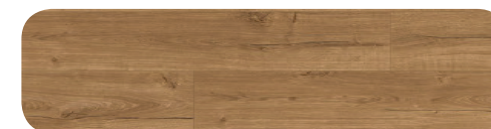
Laminated Flooring  
Fixing: Uniclic  
Measurements (mm): 1380 x 190 x 8  
m2/box: 1,835  
Domestic Warranty: 25 years  
Comercial Warranty: 5 years  
HydroSeal Sealing

### Acabados

Classic Beige Oak



Classic Natural Oak

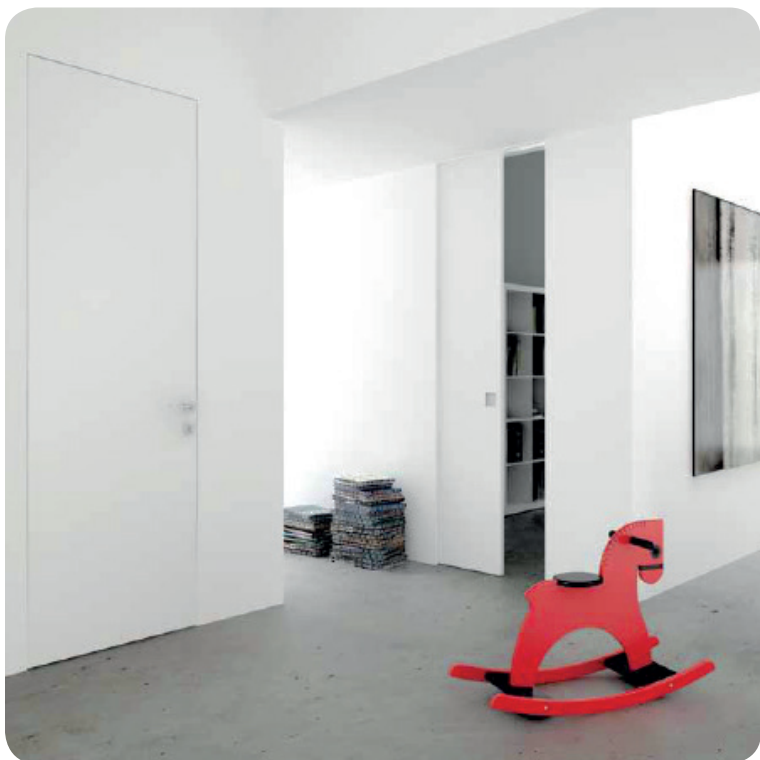


Classic Brown Oak



Soft Oak





## PARTITION WALLS

PLADUR®

Interior walls / Separation

The walls are formed by screwing two plates of Pladur® Plasterboard of different thicknesses (10, 13, or 15 mm) to both sides of a rust-resistant steel structure. The various house installations go through the interior of the structure, and do not require drilling holes or weakening the partitions.

Its interior also incorporates an insulating material, to reinforce thermal and acoustic insulation.

### Location

1st & 2nd floor walls



### Features

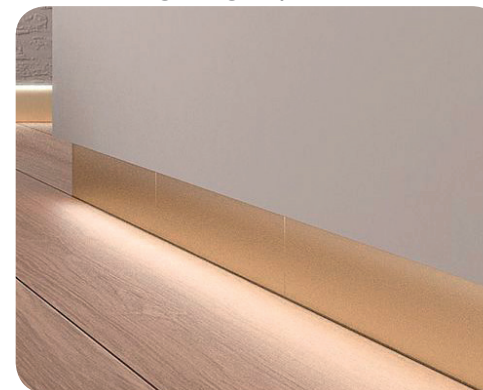
Color: Face - Light gray. Back - Brown (kraft)  
Thickness (mm): 9.5 / 13  
(Thickness and Weight According To Planimetry)  
Curved Partitions Are Included

### Accessories

Skirting Board



Lighting (optional)



## SUSPENDED CEILINGS



Pladur®  
Plasterboard Suspended Ceiling

These suspended ceilings consist of Pladur® plasterboards screwed to a galvanized steel support structure properly attached to the floor above it.

Like all Pladur® units, their surfaces are finished in a smooth and continuous way, thanks to a special treatment on joints and screws which allows for any type of final decoration.

It includes perimetric curtain tracks with the possibility of incorporating LED light lines.

Location  
1st & 2nd Floor Ceilings



### Features

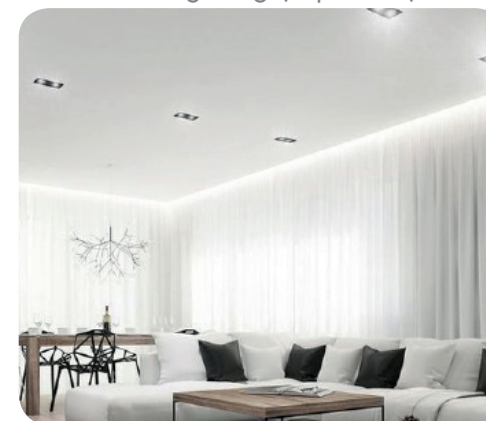
Color: Face - Light gray. Back - Brown (kraft)  
Thickness (mm): 15

### Accessories

Integrated Curtain Track



LED Lighting (Optional)





## BATHROOM TILING

Porcelanosa®  
RODANO Line  
Ceramic Tiles

Unique embossed designs and natural materials inspire the collections of these tiles, offering multiple decoration possibilities in any space.

Location  
Master Bathroom



### Features

Measurements Of The Tiles (cm): 31.6 x 59.2  
Thickness (cm): 0.9  
Monoporous Coating  
Adhesive:Fr-one-n

### Finishes

Steel



Limestone



Mole





## BATHROOM TILING

Porcelanosa®  
JERSEY/JAPAN Line  
Ceramic Tiles

A unique relief design and natural materials inspire the tile lines, offering multiple decorative choices for an amazing rendering.

Location  
1st & 2nd floor bathrooms

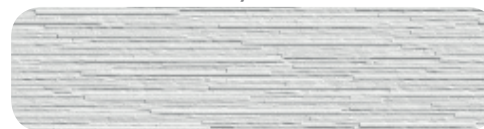


### Features

Measurements (cm): 31.6 x 59.2  
Thickness (cm): 0.9  
Monoporous Coating  
Adhesive: Fr-one-n

### Finishes

Jersey nieve



Jersey mix



Japan blanco



Japan marine





## SINKS

Roca®  
INSPIRA Line  
Over Countertop Sink

Inspira sinks are made of FINECERAMIC®, a new, high-quality ceramic material, exclusively from ROCA.

All sinks come with universal drains and a 72-mm ceramic plug. They also include:

- An oak counter (1190x520 mm)
- An oak drawer under the counter

Quantity: 7

### Location

Bathrooms 1, 2 and 3, Washroom & 1st Floor Bathroom

The Roca logo, featuring the brand name in a blue, stylized font with a wave-like underline, enclosed within a rounded rectangular border.

### Features

Washbasin Capacity (L): 11.2

Drain: Included

Shape: Round

Material: FINECERAMIC®

Installation Type: Bowl / Over countertop

Measurements (mm):

Length: 370

Width: 370

Height: 140

### Finish

Round White



## FAUCETS



Roca®  
ATLAS Line  
Single-lever High-neck (22 cm) Faucet

This faucet collection, which stands out for its elegance and versatility, includes flow limiters to 5 litres per minute, as well as the Cold Start technology that guarantees greater water and energy savings.

Quantity: 7

### Location

Bathrooms 1, 2 and 3, Washroom & 1st Floor Bathroom

The Roca logo, featuring the brand name in a blue, stylized font with a wave-like underline.

### Features

Finish: Chrome  
Water And Energy Saving  
COLD START Cold Opening  
High Neck  
Flexible Supply Hoses Included  
Water Connection Thread: 3/8 "  
Aerator Type: Integrated  
Cartridge Type: Ceramic

### Finish

Chromed





## TOILETS

Roca®  
HALL Line  
Wall-hung Toilet With Horizontal Outlet

This bathroom collection is based on minimal forms that fit perfectly, and responds to the challenges posed by current interior solution. It provides functional benefits without compromising design.

It includes:

- Duplo WC 90/110
- Chrome flush plate
- Compact seat and lid with cushioned closure

Quantity: 5

### Location

Bathrooms 1, 2 and 3, Washroom & 1st Floor Bathroom

**Roca**

### Features

Back-to-wall  
Fixing Kit: Included  
Shape: Square  
Installation Type: Wall-hung  
Outlet Type: Horizontal

Measurements (mm):  
Length: 355  
Width: 500  
Height: 400

### Finish

Compact White





## SHOWER

Roca®  
EVOLUTION Line  
Hydromassage Thermostatic Shower Column

Stainless steel hydromassage column with contemporary lines which perfectly adapts to any bathroom space and style. This thermostatic column includes a waterfall and two hydromassage jets to give an enjoyable and relaxing shower experience.

It includes a handset, holder, and 1.75 m hose.

Quantity: 1

Location  
Bathroom 1

**Roca**

### Features

Finish: Stainless Steel  
Shower Flexible Hose: Included  
Showerhead Shape: Rectangular  
Hydromassage Jet Functions: Neck, Lumbar  
Showerhead Functions: Rain  
Valve: Included  
Hydromassage / Constant massage  
Number Of Jets: 2  
Number Of Water Outlets: 5  
Number Of Diverter Outlets: 2  
Handset: Included  
Mixer Type: Thermostatic  
Type Of Hydromassage: Stimulating, Relaxing  
Installation Type: Wall-mounted

### Finish

Stainless Steel





## SHOWER

Roca®  
ESSENTIAL Line  
Hydromassage Thermostatic Shower Column

Thermostatic hydromassage column in stainless steel. Integrated jets and waterfall. It includes a handset, holder, and 1.75 m hose. The best option to enjoy a relaxing or revitalizing shower, depending on the time of the day. This attractive, sleekly-design hydromassage column offers different options to control the temperature and water flow.

Quantity: 2

Location  
Bathroom 2 y 3



### Features

Finish: Stainless Steel Matte  
Showerhead Shape: Rectangular  
Hydromassage Jet Function: Neck, Lumbar  
Showerhead Function: Rain  
Valve: Included  
Hydromassage / Constant Massage  
Number Of Jets: 2  
Number Of Water Outlets: 4  
Number Of Diverter Outlets: 3  
Handset: Included  
Mixer Type: Thermostatic  
Type of hydromassage: Stimulating, Relaxing  
Installation Type: Wall-mounted

### Finish

Stainless Steel Matte





## BATHTUB

Porcelanosa®  
ARC Krion® Line  
Oval Bathtub

Smooth lines reflect nature's purity and sophistication, consistent with a less-is-more philosophy.

100% recyclable KRION doesn't emit volatile compounds, so it guarantees SYSTEMPOOL's commitment to nature. KRION® is a fixable material. This means that the product has a long service life, reducing the need for replacement and fulfilling durability standards set by international environment guides.

Quantity: 1

Location  
Bathroom 1

**PORCELANOSA®**  
TILE / KITCHEN / BATH / HARDWOOD

### Features

Freestanding Oval Bathtub

Material: KRION®

- Intense White
- Antibacterial Protection
- 100% Recyclable
- Easy Cleaning, Without Joints
- High Resistance To Chemical Influences
- High Resistance To Fire

Dimensions (cm): 170 x 75

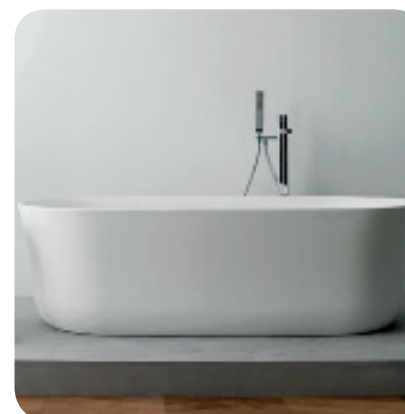
Two Backrests, Drainage In The Center

Integrated Overflow

Drainage Trim KRION® Finish.

### Finish

KRION®





## MIRROR

Roca®  
PRISMA Line  
Illuminated Mirror

Innovative and versatile collection. This mirror depicts an ideal solution for different bathroom spaces. Mirror with built-in LED lighting and aluminum frame.

Quantity: 5

### Location

Bathrooms 1, 2 and 3, Washroom & 1st Floor Bathroom

### Features

Shape: Rectangular  
Lighting: Integrated in the mirror  
Frame Material: Aluminum  
Light Power (W): 12  
Type Of Installation: Wall-mounted  
Type Of Light: LED

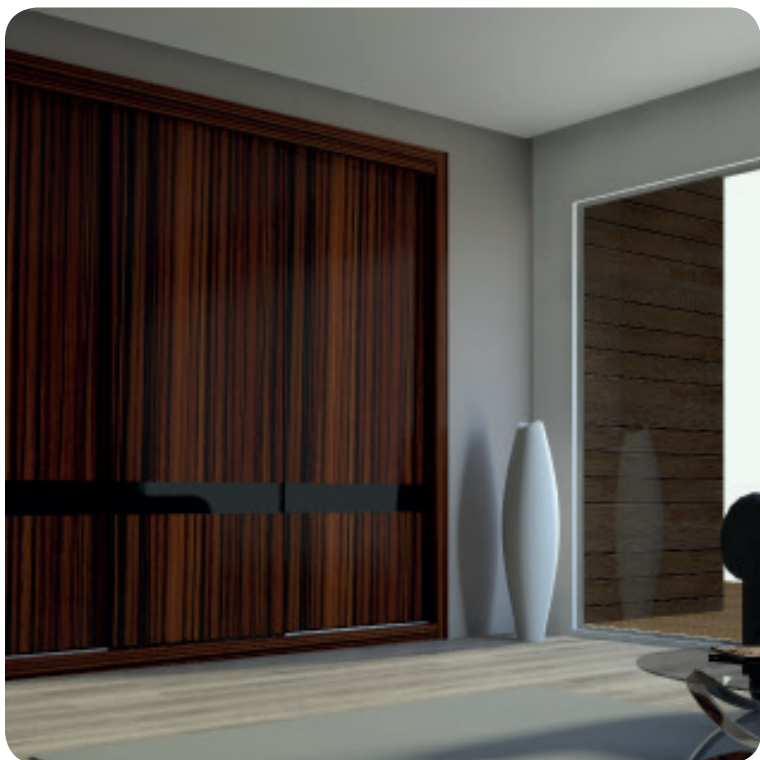
### Measurements (mm):

Length: 600  
Width: 35  
Height: 800

### Finish

Prisma 600 LED





## CLOSETS

Dakor®  
ELEGANCIA Line  
Closets and Closet Doors  
Black, Makasar Panel, 15cm Black Laquered Glass

Rectangular pieces that are linked to mix and harmonize colors and materials, forming a collage that makes this a very special door.

- New generation door fittings allow a smooth closure.
- Adjustable leveling systems to set up completely-removable cabinets or drawer guides to make the most of the space.
- High-density melamine interior.

Location  
2nd floor closets



### MASTER BEDROOM

Measurements (mm): 2600 x 600  
Height (mm): 2600

### BEDROOMS 1 & 2

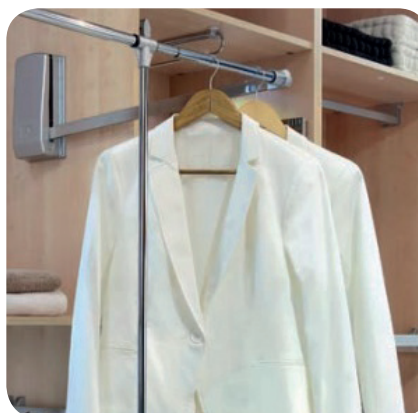
Measurements (mm): 1050 x 600 x 1600 x 1700  
Height (mm): 2600

### ENTRANCE (2)

Measurements (mm): 1000 x 650  
Height (mm): 2600

### Equipment

Folding Hanger



Trousers Rail



Shoe Racks



## INTERIOR DOORS

Interior Doors  
Solid Wood

Solid wood, a healthy and pleasant material that maintains a home's thermal conditions. Its quality resists the passage of time.

This durability, adaptability, versatility, and availability make solid wood an ideal material for home decoration.



Quantity: 6

Location  
Interior doors

### Features

Measurements (cm): 240 x 85  
Thickness (cm): 3,5  
Stainless Door Fittings  
Chrome Handle  
High-gloss Varnish

### Finishes

White varnish



Plain vertical



Handle



## LIGHTING

NIESSEN  
ZENIT Line  
Switches/Plugs

Zenit is the most complete line for all types of residential and tertiary installations. An appreciated design and a beautiful finishing line that adds value to the installations, with advanced features that add comfort and a high level of performance.

Three types of finishes are offered: White, Silver and Anthracite.



### Features

Switches:

Intensity (A): 16  
Voltage (V): 250  
Optional LED lighting

Plugs:

Intensity (A): 16  
Voltage (V): 250  
Security System That Prevents Unintentional Direct Contact  
Complete Mechanism

TV installation:

Type F - 750 Ohms  
Threaded Connector

### Finishes

White



Silver



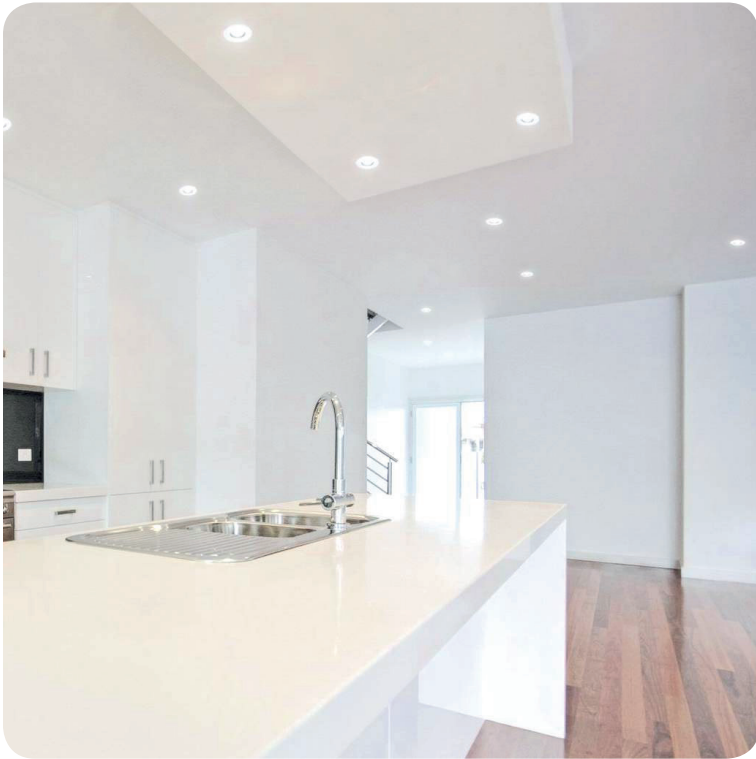
Anthracite



## LIGHTING

BPMLighting®  
MINI CATLI Luminaire  
Interior Lighting

BPMLighting® Mini Catli round recessed lighting manufactured in white aluminum. It has a tilting and swivelling light system. The ease of installation and bulb changing is remarkable. Suitable for LED bulbs (lamp holder GU10 included)



### Features

Colour temperature (°K): 3000  
Reflector: 40°  
Power (W): 10  
Protection Class: II  
Lamp: LED BPM300  
Energy Efficiency: A +  
Diameter (mm): Ø 92  
Height (mm): 88  
Degrees Tilting: 45°  
Degrees Swivel: 350°

### Finishes

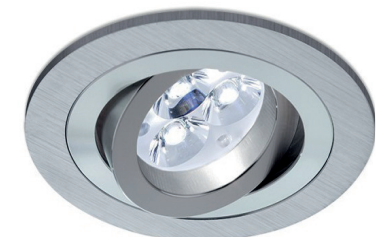
White Matte



Gold



Brushed Aluminum





## LIGHTING

BPMLighting®  
SU Classic luminaire  
Interior Lighting

BPMLighting® SU Classic R150Ø LED round recessed lighting manufactured in white aluminum. It is a fixed lighting system. The ease of installation and bulb changing is remarkable. Suitable for LED bulbs (lamp holder GU10 included).



### Features

Colour Temperature (°K): 3000  
Reflector: 40°  
Regulation: Without regulation  
Power (W): 10  
Protection Class: II  
Lamp: LED BPM300  
Energy Efficiency: A +  
Diameter (mm): Ø 85  
Height (mm): 79

### Finishes

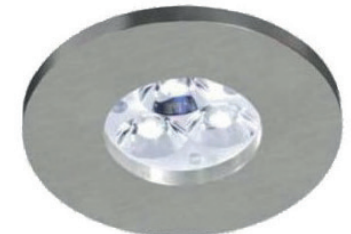
White matte



Gold



Brushed aluminum





## HEATING & COOLING

DAIKIN®

VRV IV System With Heat Recovery

The leading solution for comfort and energy efficiency.

Heat recovery transfers heat from places where cooling is required to places where hot water or heating is required. Variable Refrigerant Technology automatically adapts the refrigerant temperature to the load for optimal comfort, and increases seasonal efficiency by up to 28% when compared to other solutions.

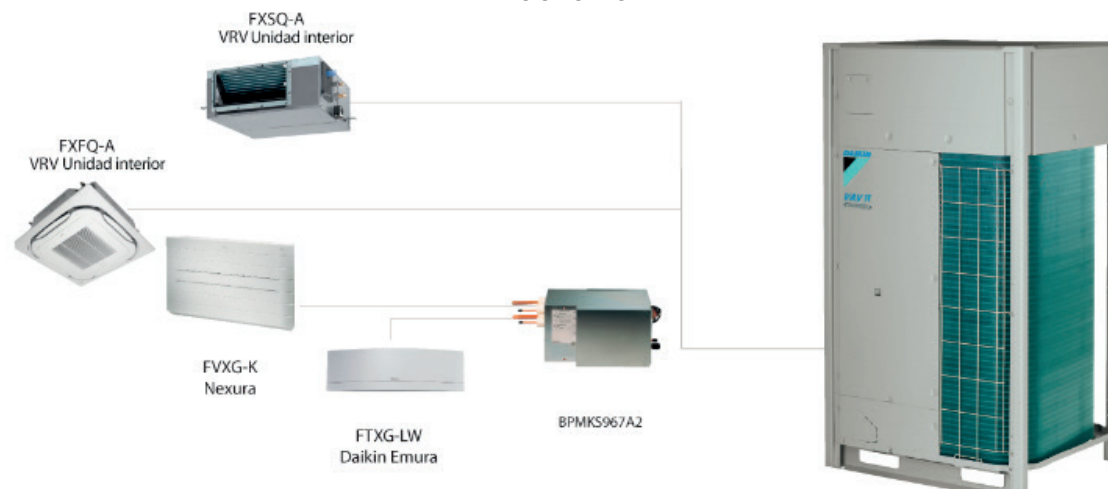
The heat exchanger's unique design is engineered for the highest seasonal efficiency, and the original 3-pipe technology increases energy efficiency during heat recovery mode.

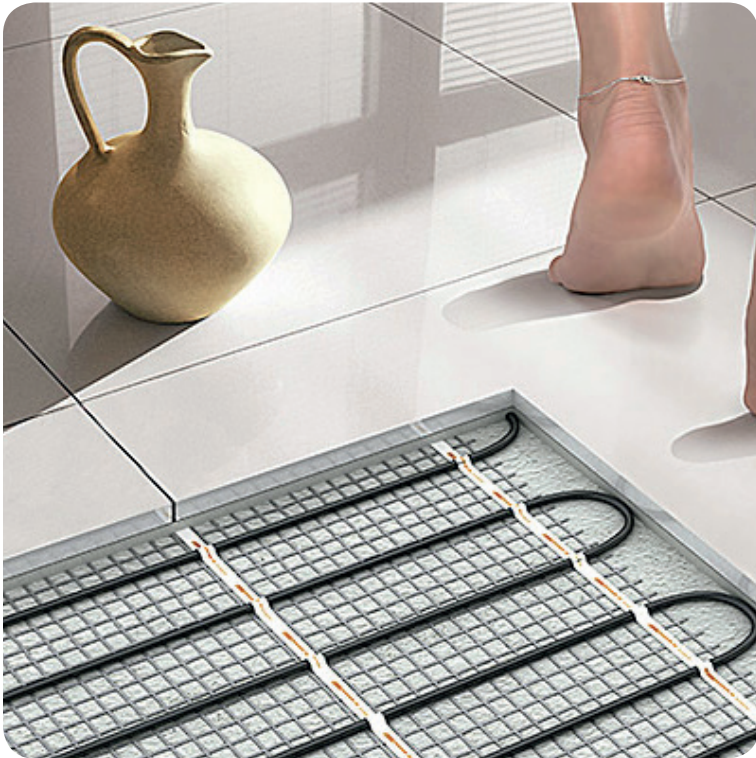


### Features

1. Outer rotor DC motor for higher efficiency. The larger rotor diameter results in greater force for the same magnetic field. A better control, resulting in more fan steps to match the actual capacity.
2. Refrigerant-cooled PCB: Reliable cooling because it is not influenced by ambient air temperature. A smaller switchbox for smoother airflow through the heat exchanger.
3. 4-sided, 3-row heat exchanger: Heat exchange surface up to 50% larger (up to 235m<sup>2</sup>), leading to 30% more efficiency.
4. Newly developed compressor: the full inverter enables variable refrigerant temperature and low start-up currents. The use of a DC fan motor offers substantial improvements in operating efficiency compared to conventional AC motors, especially during low speed rotation. High efficiency J-type 6-pole motor has 50% stronger magnetic field and higher rotation efficiency.

### Scheme





## UNDERFLOOR HEATING

DAIKIN®  
HIDROBOX Interior Unit

The Daikin VRV Hydrobox HXY125A8 interior unit, with 12.5 kW of power, is ideal for the heating and cooling of high-performance spaces, with a wide range of applications, such as hot or cold water in underfloor, air handling units, low temperature radiators, etc. Fully integrated water-side components save time on system design.

There is a wide range of functioning for hot water production, with a large exterior temperature operation range (down to -20°C and up to 15°C) and hot/cold water from 5° to 45°C; without the need for an electric heater.

Precise temperature control, fresh air supply, Biddle air curtains, and hot water production - all of that integrated in just one system that needs only one contact point.

Space saving contemporary wall-hung design.



### Features

Power (Kw): 12.5  
Type: Interior Unit  
Energy Efficiency: A  
Interior Unit Noise Level: 44db  
Measurements (mm):  
Height: 890  
Width: 480  
Depth: 344

Mod. HXY125A8



## KNX THERMOSTAT

ZENNIO®

Square TMD-Display

5-button capacitive panel and upper graphic display with thermostat



The Square TMD-Display is a capacitive room controller with 5 multifunction buttons and 1.8" backlit frame, totally customizable to cause the desired aesthetic impression in any ambience. Everyone can create unique compositions, which could include images, icons, texts or logos. This customization is printed on a high-strength tempered glass with a high-quality PC-ABS frame.

The Square TMD-Display allows selecting the function for each of its buttons and indicators shown in the display. TMD also includes a thermostat function, internal temperature sensor, and two analog/digital inputs.



### Features

- Printout Glass With Touch Surface
- Completely Customized Image For Printout Glass
- 1.8" Backlit Display (128 x 64 pixels)
- 5 Touch Areas
- 2 Analog/Digital Inputs
- No Power Supply Different From The Bus Needed
- Temperature Sensor
- State LED Indicators With Custom Luminosity
- KNX BCU Integrate.
- Magnetic Fit With Security Mechanism To Avoid Accidental Removal
- Metallic Stand Included
- Complete Data Saving In Case Of Power Failure

### Finishes



## TOUCH SCREEN

ZENNIO®  
Z70 COM  
7" capacitive touch screen



The Z70 COM is a color capacitive touch panel with 7" display, including the built-in Zennio GeFace IP Video Intercom System. Complying with minimalist aesthetics, it provides total control in smart homes and complete communication with the video intercom, including microphone and loudspeakers.

The built-in proximity sensor makes the screensaver appear when the touch panel is not being used and the luminosity sensor adjust the brightness automatically. It is possible to control it remotely from smartphones and tablets with the free mobile app. Z70 COM incorporates an internal temperature sensor, thermostat, and 4 analog-digital inputs. It includes a USB port for configuration download and an Ethernet port. Plug&Play System without additional configurations. Accessories: temperature and motion sensors.



### Features

- 7" Capacitive Touch Screen
- 16 Million Colour LCD Display
- Up To 12 Free Configuration Pages
- Up To 96 Control Functions And/Or Free Configuration Indicators
- Video Intercom Functionality Controlling Up To 3 Doors
- 2 Independent Thermostats
- Customizable Device Orientation (Vertical Or Horizontal)
- Built-in Temperature Sensor
- Synchronizable Clock With NTP
- External Power Of 12-29VDC.
- BCU KNX Integrated
- Mini-USB Connection
- Magnetic Anchoring

### Finishes



## RENEWABLE ENERGY

MÜNCHEN SOLAR®

Photovoltaic Panels

Polycrystalline Panel with 6 x 10 Squared Cells, Laminated With Glass and Aluminum Frame

The München Solar polycrystalline panel has a 250 W capacity.

The solar module is composed of several laminated layers. Starting from the back, it is a soft plastic surface, followed by a double-sided adhesive, the actual doped wafer, another double-sided adhesive, and then a specially-hardened glass surface. Individual parts are pressed together under heat and pressure.

The connection box fits flush with the frame and has a PG gland so moisture cannot penetrate.



MünchenSolar  
MAXIMALENERGIE

### Features

Maximum Power: 250 W

Voltage With The Maximum Power: 31.02V

Maximum Current: 8.06A

Open Circuit Voltage: 36.99V

Short Circuit Current: 8.62A

Working Temperature (°C): -40 to +85

Measurements (mm): 1640 x 990 x 40

IT INCLUDES:

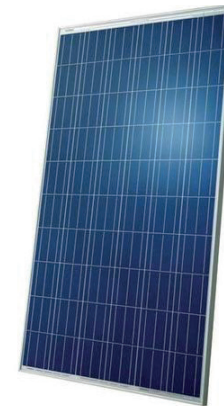
20 Panels

Inverter/Analyser/Counter/Structure/Wiring

IT DOES NOT INCLUDE:

Batteries

### München Solar 250 Wp



## RENEWABLE ENERGY



Solar panels

DAIKIN

Vertical format high selectivity solar panel. Drain-Back system

The most efficient option is always to use free energy. Thermal solar energy for the production of domestic hot water is mandatory in new construction and can represent savings of up to 80% in related energy costs.

Drain-Back system features:

1. Protection against extreme temperatures. Whether at times of frost or high solar radiation, the collectors are free of liquids in order to avoid overpressure and safeguard the whole system.
2. Easy installation. On including all the necessary elements for correctly managing the primary circuit, it is only necessary to install the solar panels and join them to the tank.
3. Economic. The automated drainage system avoids the installation and maintenance of drain traps and an expansion vessel, essential in a conventional solar installation.



### Features

Measurements (HxWxD) 2,000 x 1,300 x 85 mm

Weight: 42 kg

Absorber: Harp-shaped Copper Pipe Register With Laser-welded highly selective coated aluminium plate

Coating: Micro-Therm

Anodised Aluminum Casing

Gross area: 2.60 m<sup>2</sup>, Aperture Area: 2.35 m<sup>2</sup> (energy absorber)

Heat Insulation: Mineral wool, 5 cm

Allowed Angle: 15°/80°

IT INCLUDES:

2 Panels

Regulating and Pumping Units/Piping 20 m

### Daikin Drain Back EKS26P

