

SH URBAN



SUNHOUSE
360°

CONTENTS

HOUSE PACK

- FOUNDATIONS AND ROTATION SYSTEM 4
- SUPPORTING STRUCTURE 5
- EXTERIOR WALLS 6
- EXTERIOR CLADDING 7
- WINDOWS AND DOORS 8
- OUTDOOR FLOOR 11
- STAIRCASE 12
- SH360° APPLICATION 13

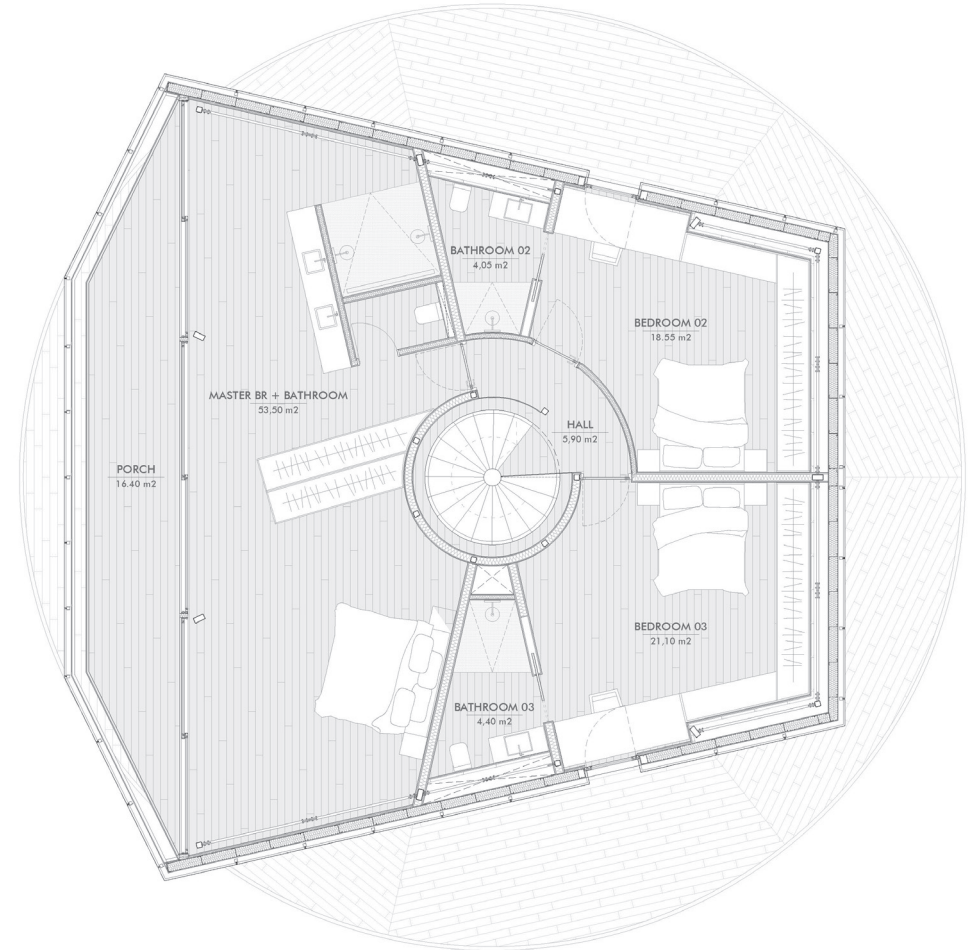
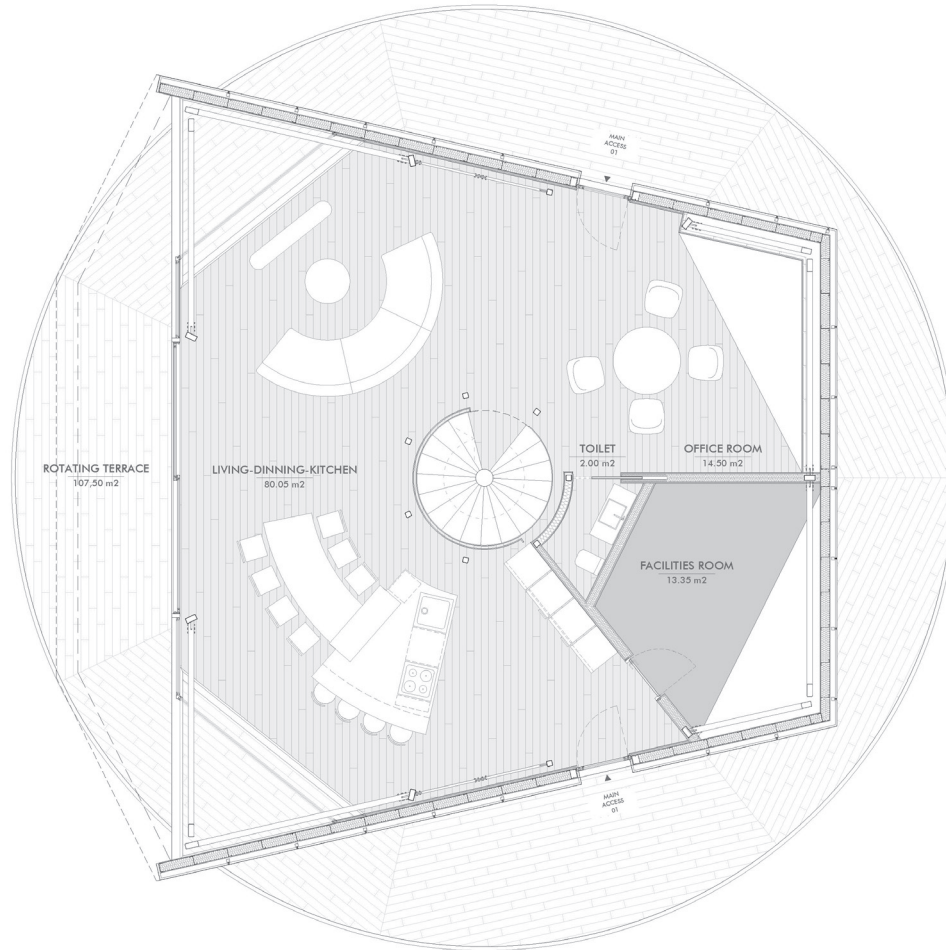
INTERIOR PACK

- INDOOR WOODEN FLOOR 14
- PARTITION WALLS 15
- SUSPENDED CEILINGS 16
- INTERIOR DOORS 17
- CLOSETS 19
- BATHROOM TILING 20
- SINKS 23
- KITCHEN 30
- LIGHTING 39
- HEATING & COOLING 40
- UNDERFLOOR HEATING 43
- RENEWABLE ENERGY 44

FEATURES

GROUND FLOOR

FIRST FLOOR



Constructed Area: 288 m² / Useful Floor Area: 225.4 m² (1st Floor: 114 + 2nd Floor: 111.4) / Terrace: 107.5 m² / Porch: 16.4 m²

*Showing 3-Bedroom Model (More Arrangements Available)

FOUNDATIONS AND ROTATION SYSTEM

REINFORCED CONCRETE STRUCTURE

Rotation system

Set of wheels

The foundation base consists of a reinforced concrete slab with two openings for the inspection of the motors (these openings are made when there is a basement beneath the slab).

On top of the slab, two circular reinforced concrete beams are placed: a central beam on which all of the rotating system will rest (metal support plate + slewing ring + top rim);

And a lower beam, on which a flat metal bar is placed to serve as the rolling base for the wheels.



TO BE CARRIED OUT BY THE DEVELOPER:

2.00m x 1.00m opening for inspection of the motor, in case there is a basement.

Flat steel metal bar, perfectly placed on a horizontal plane. Rolling base for wheels.

Circular reinforced concrete beam with $\varnothing 32$ mm bolts. Base for the rotation system.

The rotation system, driven by a servomotor, is placed on the central reinforced concrete beam. The servomotor, which is what makes rotation possible, has an output speed of 0.80 rpm and a power of 2.20 kW.

Steel wheels with high load capacity and low friction coefficient provide support for the dwelling's entire base structure and allows it to rotate 360°.

SUPPORTING STRUCTURE

S-275 LAMINATED STEEL STRUCTURE



The main parameters that have been taken into account in connection with the structure's main load bearing capacity are the structural resistance of all the elements, sections, points and unions, and the overall stability of the building and of all its parts; and in respect to the service conditions, control of deformations, vibrations and damages or deterioration that could negatively affect the dwelling's appearance, durability or functionality, determined by the basic calculation documents CTE-DB-SE and CTE-DB-SI.6 as regards the structure's resistance to fire. In addition, aesthetic parameters were also taken into account, such as avoiding fixed beams.

The dwelling's main structure consists of a series of heat laminated metal profiles. All the beams and pillars comprise a structural framework assembled by means of screwed unions.

All of the pieces were formed in accordance with the design of the detailed structural drawing, which facilitates the direct assembly of the pieces at the building site, avoiding cuts and welding joints and thus favouring a rapid and clean building process.

Specifications

Beams: HEA 160 and HEA 140 (S-275 steel).
Pillars: #200.100.6.3 and #100.100.5 (S-275 steel)
Anti-corrosion protection coating.
Coating of intumescent paint

Finishes

Preformed pieces



Screwed unions





EXTERIOR WALLS

GALVANISED SUBSTRUCTURE

Exterior sandwich panel walls

The substructure of the façade and the slabs is built with sandwich-type panels, comprising a structural framework of Z.150.2 section profiles, 150mm rockwool insulation filler and double-sided OSB-3 board.

The walls are rendered with breathable waterproof sheeting, Delta Fassade model. The roof is finished with very high performance protected reflecting sheeting.

Specifications

Profiles on walls and slabs: Z.150.2 galvanised steel

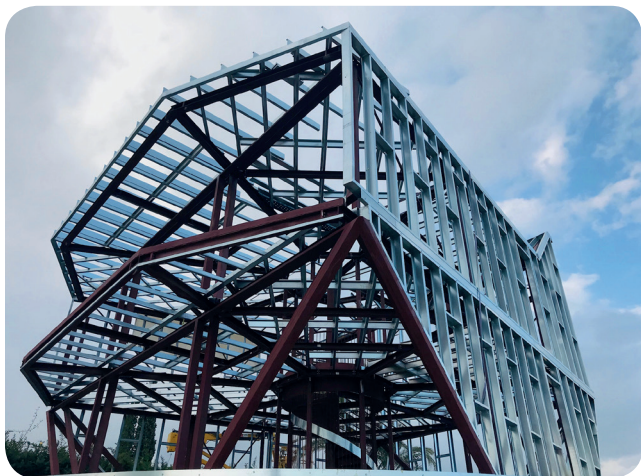
Terrace roof: Z.120.3 galvanised steel

Purlins and anchor profiles: C.150.2 galvanised steel

Thermal and noise insulation: ALPHAROCK E.225 - 150 mm rockwool

Double OSB-3 on walls: 12 mm +12 mm

Double OSB-3 on slabs: 22 mm superior + 12 mm inferior





EXTERIOR CLADDING

ALUMINIUM VENTILATED FAÇADE

Lacquered aluminium panels.

The lacquered aluminum panels have a quality of AA5005, with a marine treatment that allows optimal behavior against resistance to nitrate, they are panels that have a thickness of 3mm, and there is a wide variety of finishes, such as die-cut, punching, milled or curved.

All of them can be baked lacquered, or if you prefer, have a metallic anodized appearance.

Round perforated panel.
Ral Standard Matte Color.

Location
Facade

Features

Lacquered aluminium panels.

Thickness: 3 mm.

AA5005 quality aluminium with marine treatment for better resistance to saltpetre.

Finishing: perforated in round 6mm, single, with distance between centres of 14mm.

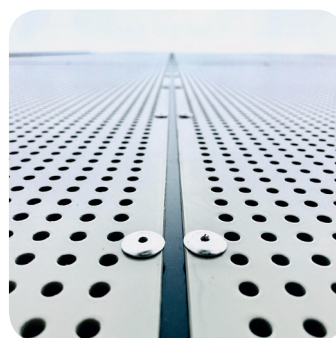
Lacquered 2 sides in Ral Standard Matte.

Subject to substructure: Rivets

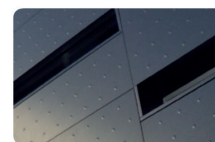
Perimeter fences : Angular profiles L, of variable section, attached to the panel by polymer.

Options

Rivets



Wide range of finishes



PUNZONADO / PUNCHING / POINÇONNÉ



TROQUELADO / DIE CUTTING / DÉCOUPÉ



FRESADO / MILLING / FRAISÉ



CURVADO / CURVED / COURBÉ

RAL Colour





WINDOWS AND DOORS

SCHÜCO®
ASS 50
Lift-and-slide Door

The lift-and-slide doors of the Schüco ASS 50 system allow large opening areas (three tracks allow large openings widths 2/3 the size of the unit) without taking up too much space since the leaves move at the same level. The lift-and-slide system is perfectly weather-tight, providing excellent thermal insulation and sound reduction.

Lift-and-slide doors can be customized according to the customer's wishes.

The surface finishings of Schüco systems, whether anodized or lacquered, meet the most demanding quality standards. A wide range of colors and textures are available for both indoor and outdoor use.

Quantity: 4

Location
1st & 2nd floors

SCHÜCO

Features

ALUMINUM

Measurements (mm): 2860 x (5020 / 4270)

Thickness (mm): 84

Stainless Steel Fittings

Special Exterior Varnish Finish: RAL Oxidon Sand

Glazing: Climalit SG STADIP PLANITHERM 4S

6+6/12AIR/4+4

(OPTION: TRIPLE GLAZING)

Model

Shüco ASS 50



WINDOWS AND DOORS



SCHÜCO®
AWS 65
Tilt-and-turn Windows

The design of Schüco® systems goes back to basics. The new generation of AWS (Aluminum Window System) windows is a system created for all types of architectural, creative and functional needs, achieving a particularly elegant aesthetic.

Comfort and energy savings from the first moment.

Quantity: 2

Location
Bedroom 1 & 2

SCHÜCO

Features

ALUMINUM

Measurements [B x H] (mm): 950 x 2750

Special Exterior Varnish Finish: RAL Oxidon Sand

Glazing: Climalit SG STADIP PLANITHERM 4S 6+6/12AIR/4+4

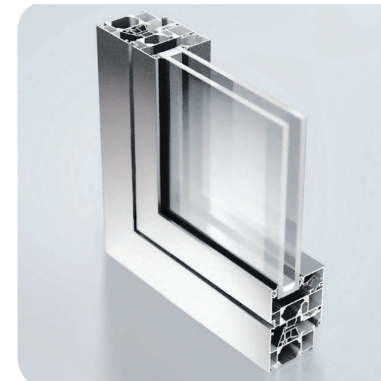
Hardware Type: BASIC - AvanTec SimplySmart Compass

Internal Handle: Stainless Steel Inner Handle.

(OPTION: TRIPLE GLAZING)

Model

Shüco AWS 65



WINDOWS AND DOORS



SCHÜCO®
ADS 65
Entrance Door

The Schüco ADS 65 entrance door offers very good thermal insulation. . If optional equipment is selected to be installed, it can be used as a multifunctional door and integrated in smart home automation and building safety.

It perfectly matches the other doors and windows of the SH URBAN house.

Quantity: 2

Location
1st floor entrance

SCHÜCO

Features

ALUMINUM

Measurement Of The Element [B x H] (mm): 950 x 2750

Measurement Of The Sheet [B x H] (mm): 852 x 2652

Internal And External Handle: Stainless Steel Handle.

Special Exterior Varnish Finish: RAL Oxidon Sand

Glazing: Climalit SG STADIP PLANITHERM 4S 6+6/12AIR/4+4

(OPTION: TRIPLE GLAZING)

Model

Shüco ADS 65





OUTDOOR FLOOR

TECHNOLOGICAL WOOD FLOOR

Tech-wood is a microcomposite consisting of 65% premium wood fibers and 35% high-density polyethylene (HDPE) particles.

It does not contain VOC's (Volatile Organic Compounds), formaldehyde, glues, PVC, heavy metals, or products that are hazardous to health.

Tech-wood products are 100% recyclable at the end of their useful life, and the process of their preparation is clean, does not pollute, and consumes little energy. The wood is of certified origin (PEFC) and comes from the cleaning of European forests - no trees are cut for the manufacture of these products.

Location

1st floor rotating terrace
2nd floor terrace

Features

Measurements (mm): 150 x 21 x 2200
Density (kg/m³): 1200
20-year Warranty
Resistance To Termites
Resistance To Water And Humidity
Brinell Hardness Resistance
Non-slip

Finishes

Lisa Bicolor



Veta Madera



STAIRCASE

CENTRAL SPIRAL STAIRCASE

The staircase is made of a 300 mm stainless steel tube that serves as the main axis with 4 mm wooden steps attached to stainless steel supports.

A 2-mm wide spiral wraps around the outer edge of the steps and also has tubular stainless steel interior handrails.



Location

Central staircase of the house (From 1st to 2nd floor)

Features

STAIRCASE

Height: 3.50 m
Diametre: 2,40 m
Height of tube: 6,30 m

STEPS

N° of steps: 17

SPIRAL

Material: Steel
Width: 2 mm
Height: 1,00 m
Tubular interior handrail

Options

Multiple finishes



LED lighting



SH360° APPLICATION



All our rotating houses and platforms come with our SH360° Mobile app.

Ergonomic and astonishingly easy to use, it allows you to activate the two economic electric motors controlling the rotation of the house.

In particular, the user can select to have a pre-programmed view, to have one particular room automatically follow the sun, or to have the house stay in its optimal orientation to save energy.

A useful and truly intuitive app!



ECO

This mode is designed to save the maximum amount of energy. The house rotates automatically in order to obtain the maximum or minimum amount of heat capture.



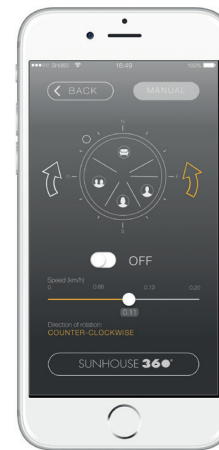
EGO

A room determined by the customer follows the path of the sun, receiving sunlight throughout the day.



ONE

A room determined by the customer is based on a previously programmed view.



MAN

This manual mode allows the user to control both the speed and direction of rotation, without any limitation on the number of rotations.





INDOOR WOODEN FLOOR

LAMINATED FLOOR

Naturdec® AC4

Naturdec® AC4 laminate flooring is a fantastic collection, with an exceptional natural look and feel. For example, the authentic grain of the plates is perfectly reflected in the joints. And it is not only beautiful, but also waterproof, since they are HDF Plus boards against humidity.

The patented JUST click system allows easy placement without tools or glue, achieving excellent surface stability. Tables can be installed row by row.

Location

Living Room / Kitchen / Dining Room

Office

1st floor washroom

Bedrooms



Features

Synthetic flooring brand Naturdec AC4 8mm, class 32, Syrah finishing.

Dimensions 8x192x1192.

3mm polyethylene fabric with aluminium sheet on the bottom side.

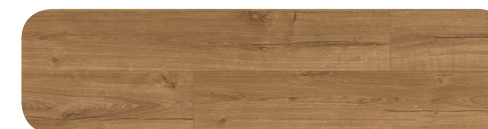
Flexible white PVC skirting board.

Finishes

Classic Beige Oak



Classic Natural Oak



Classic Brown Oak



Soft Oak



PARTITION WALLS

PLADUR®
Interior walls / Separation

The walls are formed by screwing two plates of Pladur® Plasterboard of different thicknesses (10, 13, or 15 mm) to both sides of a rust-resistant steel structure. The various house installations go through the interior of the structure, and do not require drilling holes or weakening the partitions.

Its interior also incorporates an insulating material, to reinforce thermal and acoustic insulation.



Location
1st & 2nd floor walls



Features

Color: Face - Light gray. Back - Brown (kraft)
(Thickness and Weight According To Planimetry)
Curved Partitions Are Included

Accessories

Skirting Board



Lighting (optional)



SUSPENDED CEILINGS

PLADUR®
Plasterboard Suspended Ceiling

These suspended ceilings consist of Pladur® plasterboards screwed to a galvanized steel support structure properly attached to the floor above it.

Like all Pladur® units, their surfaces are finished in a smooth and continuous way, thanks to a special treatment on joints and screws which allows for any type of final decoration.

It includes perimetric curtain tracks with the possibility of incorporating LED light lines.



Location
1st & 2nd Floor Ceilings



Features

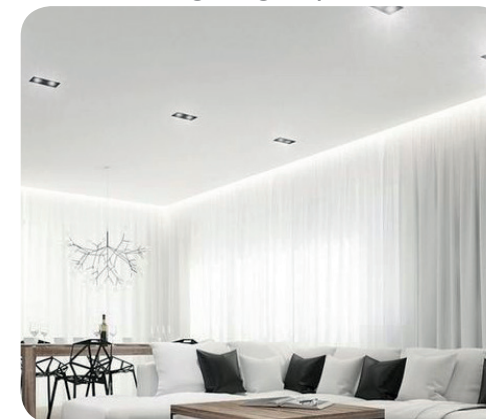
Color: Face - Light gray. Back - Brown (kraft)
Thickness (mm): 15

Accessories

Integrated Curtain Track



LED Lighting (Optional)



INTERIOR DOORS

INTERIOR DOORS

Solid Wood

Solid wood, a healthy and pleasant material that maintains a home's thermal conditions. Its quality resists the passage of time.

This durability, adaptability, versatility, and availability make solid wood an ideal material for home decoration.



Quantity: 3

Location

Interior doors

Features

Measurements (cm): 240 x 85

Thickness (cm): 3,5

Stainless Door Fittings

Chrome Handle

High-gloss Varnish

Finishes

White varnish



Plain vertical



Handle



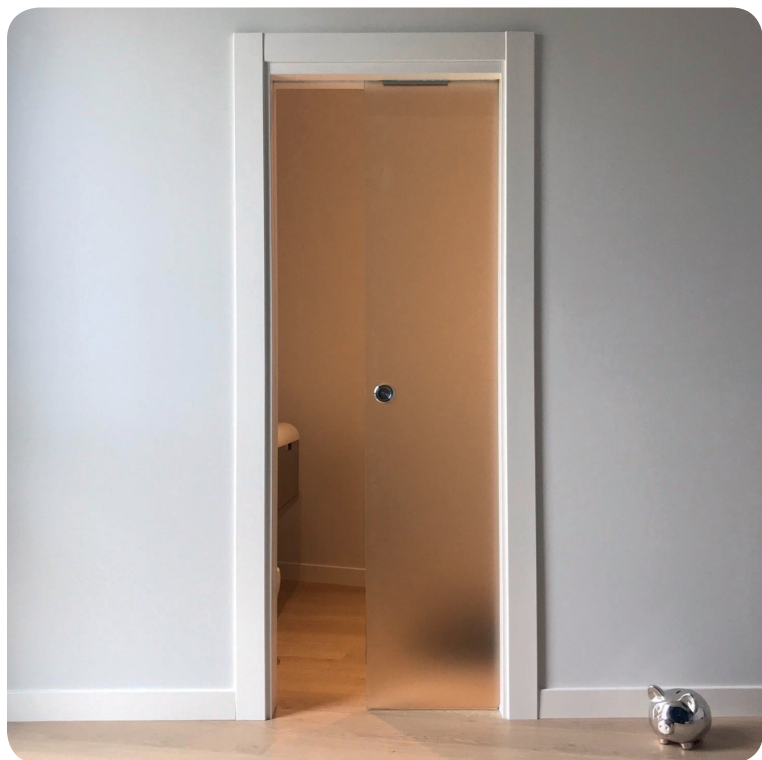
INTERIOR DOORS

POCKET DOORS

Glass

This sliding wooden door system completely hides the guide when the door is either opened or closed. Its high-performance sliding system is equipped with fully-invisible shock absorbers that allow for smooth braking when opening or closing the door.

Plain model, glazed, varnished on white or any other color on the RAL Color Chart.



Quantity: 4

Location

Master Bedroom
Bathrooms and washroom

Features

Measurements (cm): 240 x 85
Thickness (cm): 0,5
Stainless Steel Door Fittings
Built-in Handle
High-gloss Varnish

Finishes

Varnished white

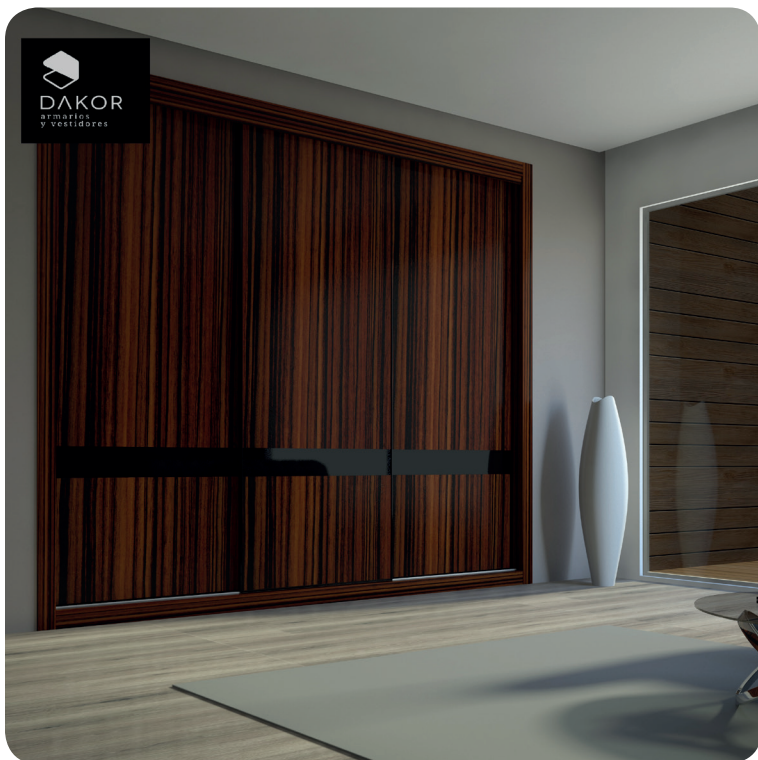


Plain vertical



Built-in handle





CLOSETS

Dakor®
ELEGANCIA Line
Closets and Closet Doors
Black, Makasar Panel, 15cm Black Laquered Glass

Rectangular pieces that are linked to mix and harmonize colors and materials, forming a collage that makes this a very special door.

- New generation door fittings allow a smooth closure.
- Adjustable leveling systems to set up completely-removable cabinets or drawer guides to make the most of the space.
- High-density melamine interior.

Location
1st and 2nd floor closets



Features

BEDROOMS 1 & 2 (mm): 2750 x 3710 x 640
3 Sliding Doors

MASTER BEDROOM (A) (mm): 2750 x 3280 x 640
3 Sliding Doors

MASTER BEDROOM (B) (mm): 2750 x 2370 x 640
2 Sliding Doors

ENTRANCE CLOSET (mm): 2750 x 2010 x 640
2 Sliding Doors

Each Closet Has A Completely Equipped Interior
Colour TO DEFINE

Equipment

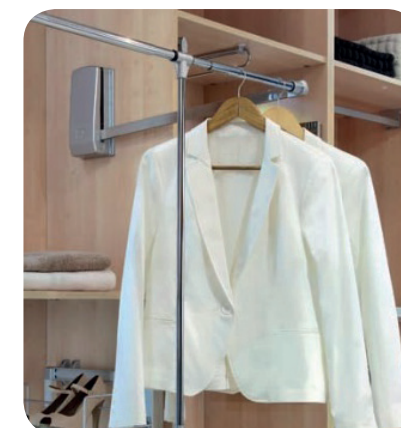
Folding Hanger



Trousers Rail



Shoe Racks





BATHROOM TILING

Porcelanosa®
RODANO Line
Ceramic Tiles

Unique embossed designs and natural materials inspire the collections of these tiles, offering multiple decoration possibilities in any space.

Location
Master Bathroom



Features

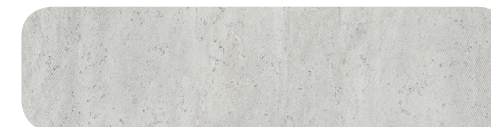
Measurements Of The Tiles (cm): 31.6 x 59.2
Thickness (cm): 0.9
Monoporous Coating

Finishes

Steel



Limestone



Mole



BATHROOM TILING

Porcelanosa®
JERSEY/JAPAN Line
Ceramic Tiles

A unique relief design and natural materials inspire the tile lines, offering multiple decorative choices for an amazing rendering.



Location
1st & 2nd floor bathrooms



Features

Measurements (cm): 31.6 x 59.2
Thickness (cm): 0.9
Monoporous Coating

Finishes

Jersey Nieve



Jersey Mix



Japan Blanco



Japan Marine



BATHROOM TILING

Porcelanosa®
MENORCA Line
Ceramic Tiles

This tiling appears to create multiple surfaces while the joints between the tiles skillfully disappear, creating a very harmonious finish.



Location
1st floor washroom



Features

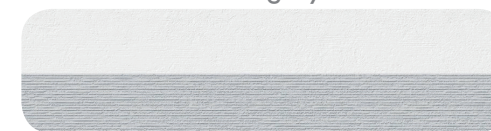
Measurements Of The Tiles (cm): 31.6 x 90
Thickness (cm): 0.9
Monoporous Coating

Finishes

Line White



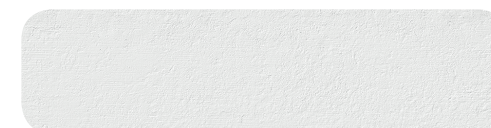
Line grey



Mole



White





SINKS

Roca®
INSPIRA Line
Over Countertop Sink

Inspira sinks are made of FINECERAMIC®, a new, high-quality ceramic material, exclusively from ROCA. All sinks come with universal drains and a 72-mm ceramic plug. They also include:

- An oak counter (1190x520 mm)
- An oak drawer under the counter

Location

1st Floor Washroom
Bathrooms Of Bedrooms 1 & 2

Quantity 5

The Roca logo, featuring the brand name in a blue, stylized font with a wave-like underline.

Features

Washbasin Capacity (L): 11.2
Drain: Included
Shape: Round
Material: FINECERAMIC®
Installation Type: Bowl / Over countertop

Measurements (mm):

Length: 370
Width: 370
Height: 140

Finish

Round Blanco





FAUCETS

Roca®
ATLAS Line
Single-lever High-neck (22 cm) Faucet

This faucet collection, which stands out for its elegance and versatility, includes flow limiters to 5 litres per minute, as well as the Cold Start technology that guarantees greater water and energy savings.

Location

1st Floor Washroom
Bathrooms Of 2nd Floor Bedrooms

Quantity: 5

Features

Finish: Chrome
Water And Energy Saving
COLD START Cold Opening
High Neck
Flexible Supply Hoses Included
Water Connection Thread: 3/8 "
Aerator Type: Integrated
Cartridge Type: Ceramic

Finish

Chromed





TOILETS

Roca®
HALL Line
Wall-hung Toilet With Horizontal Outlet

This bathroom collection is based on minimal forms that fit perfectly, and responds to the challenges posed by current interior solution. It provides functional benefits without compromising design.

It includes:

- Duplo WC 90/110
- Chrome flush plate
- Compact seat and lid with cushioned closure

Quantity: 4

Location

1st Floor Washroom
Bathrooms Of 2nd Floor Bedrooms

Features

Back-to-wall
Fixing Kit: Included
Shape: Square
Installation Type: Wall-hung
Outlet Type: Horizontal

Measurements (mm):

Length: 355
Width: 500
Height: 400

Finishes

Compact White





SHOWER

Roca®
EVOLUTION Line
Hydromassage Thermostatic Shower Column

Stainless steel hydromassage column with contemporary lines which perfectly adapts to any bathroom space and style. This thermostatic column includes a waterfall and two hydromassage jets to give an enjoyable and relaxing shower experience.

It includes a handset, holder, and 1.75 m hose.

Quantity: 1

Location
Master Bathroom

Roca

Features

Finish: Stainless Steel
Shower Flexible Hose: Included
Showerhead Shape: Rectangular
Hydromassage Jet Functions: Neck, Lumbar
Showerhead Functions: Rain
Valve: Included
Hydromassage / Constant massage
Number Of Jets: 2
Number Of Water Outlets: 5
Number Of Diverter Outlets: 2
Handset: Included
Mixer Type: Thermostatic
Type Of Hydromassage: Stimulating, Relaxing
Installation Type: Wall-mounted

Finish

Stainless Steel





SHOWER

Roca®
ESSENTIAL Line
Hydromassage Thermostatic Shower Column

Thermostatic hydromassage column in stainless steel. Integrated jets and waterfall. It includes a handset, holder, and 1.75 m hose. The best option to enjoy a relaxing or revitalizing shower, depending on the time of the day. This attractive, sleekly-design hydromassage column offers different options to control the temperature and water flow.

Quantity: 2

Location
Bathroom Of Bedrooms 1 & 2

Roca

Features

Finish: Stainless Steel Matte
Showerhead Shape: Rectangular
Hydromassage Jet Function: Neck, Lumbar
Showerhead Function: Rain
Valve: Included
Hydromassage / Constant Massage
Number Of Jets: 2
Number Of Water Outlets: 4
Number Of Diverter Outlets: 3
Handset: Included
Mixer Type: Thermostatic
Type of hydromassage: Stimulating, Relaxing
Installation Type: Wall-mounted

Finish

Stainless Steel Matte





BATHTUB

Porcelanosa®
ARC Krion® Line
Oval Bathtub

Smooth lines reflect nature's purity and sophistication, consistent with a less-is-more philosophy.

100% recyclable KRION doesn't emit volatile compounds, so it guarantees SYSTEMPOOL's commitment to nature. KRION® is a fixable material. This means that the product has a long service life, reducing the need for replacement and fulfilling durability standards set by international environment guides.

Quantity: 1

Location

Bathroom in Master Bedroom

PORCELANOSA®
TILE / KITCHEN / BATH / HARDWOOD

Features

Freestanding Oval Bathtub

Material: KRION®

- Intense White
- Antibacterial Protection
- 100% Recyclable
- Easy Cleaning, Without Joints
- High Resistance To Chemical Influences
- High Resistance To Fire

Dimensions (cm): 170 x 75

Two Backrests, Drainage In The Center

Integrated Overflow

Drainage Trim KRION® Finish.

Finish

KRION®





MIRROR

Roca®
PRISMA Line
Illuminated Mirror

Innovative and versatile collection. This mirror depicts an ideal solution for different bathroom spaces. Mirror with built-in LED lighting and aluminum frame.

Quantity: 3

Location

1st floor washroom
Bathrooms of bedrooms 1 & 2



Features

Shape: Rectangular
Lighting: Integrated in the mirror
Frame Material: Aluminum
Light Power (W): 12
Type Of Installation: Wall-mounted
Type Of Light: LED

Measurements (mm):

Length: 600
Width: 35
Height: 800

Finish

Prisma 600 LED





KITCHEN

COPATLIFE®

This kitchen includes:

- Great storage space with integrated home appliances. High density four faced laminated doors with melamine resin coating.
- A central island equipped with an induction cooker, sink and a large amount of storage space.
- A piece of furniture separating the central island from the table, providing storage for dishes or decorative elements.
- A dining table for 7 people

Location
Kitchen

copatlife

Features

Colour To Choose.

Counter Material: Silestone 4cm

Table Material: Silestone 4cm

Plinth 8cm, colour champagne.

Multiple finishes





SINK

FRECAN®

Model BMR-5040 Under-Counter Sink

BMR under counter Sinks line is characterised by their straight lines design and their 15 mm radius. With drainage and valve square in shape it covers the needs of a great kitchen.

Quantity: 1

Location
Kitchen

FRECAN

Features

Material: Stainless Steel

Measurements (cm): 60 x 54.2 x 44.2

Finish





FAUCET

FRANKE®
Active Plus With Pull-out Sprayer

The pull-out sprayer is connected to a tube that can be extended to the spot where water is needed in your sink.

The extendable spray has a swivel throat and a detachable pipe offering more versatility.

Location
Kitchen

Quantity: 1



Features

Base: Ø 50 mm
Version: Detachable Pipe
Type: Mixer Cartridge
Type Of Control: Side Lever
Total Height (mm): 310.00
360° Rotation

Finish



EXTRACTOR HOOD

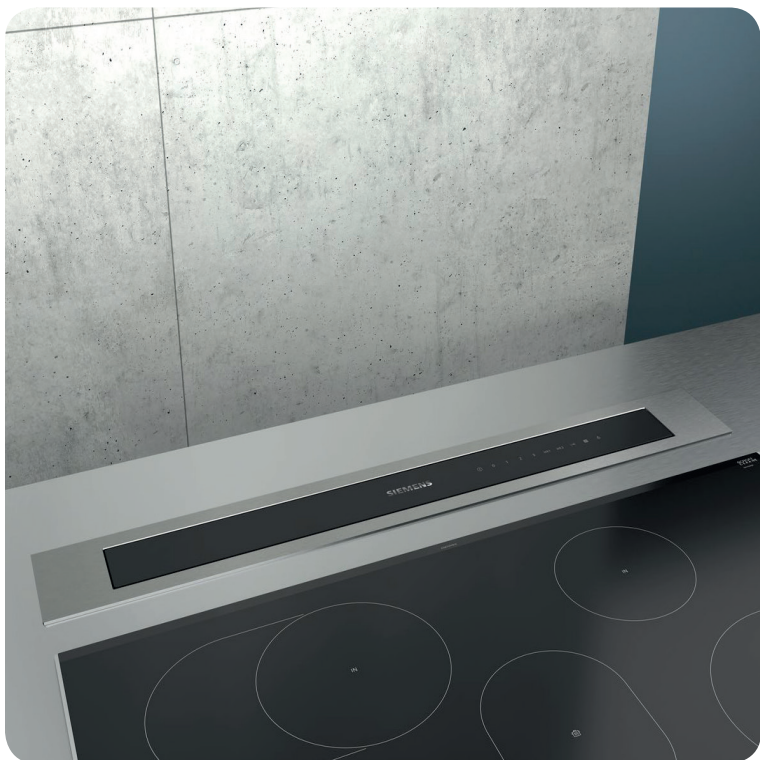
SIEMENS®
iQ700 Telescopic Worktop Extractor

Countertop extractor with an impressive design and features that offers maximum flexibility in its installation. The high-performance motor ensures optimal smoke and odor extraction in the most efficient and quiet way.

Maximum flexibility of installation of the motor that allows to make the most of the space under the worktop. Its installation saves space under the worktop, and the motor can even be decoupled from the extractor. It has perfect LED lighting and efficient visibility when cooking.

Thanks to the touchControl it is possible to easily control the power level and LED lighting.

Quantity: 1



Location
Kitchen

SIEMENS

Features

Extractor with possibility of flush installation on the worktop
Perimeter aspiration system.
Dishwasher washable filters
Electronic indicator of saturation of grease filters and activated carbon
5 extraction powers
Intensive power with automatic retraction.
Maximum extraction power: 750 m³ / h (according to UNE / EN 61591).
Extraction power at level 3: 530 m³ / h.
Sound power at level 3: 58 dB (A)
Timed automatic disconnection
LED lighting: maximum luminosity and high efficiency.
Possibility of installation in air outlet to the outside or in recirculation.

Finish

iQ700 90cm Metallic





AMERICAN STYLE FRIDGE

INTERIOR PACK
HOME APPLIANCES

LG®

EAN: Model 6934585683591 Refrigerator

The optimization of the cooling components and the use of special insulation materials increase the capacity ensuring an A++ energy consumption in american style refrigerators.

Quantity: 1



Location
Kitchen

Features

Capacity (L): 601

Special Lighting System Through Low-Consuming LEDs

Energy Efficiency Classification (2010/30/EC) : A++

No. Of Adjustable Shelves In The Refrigerator: 4

Measurements (Height x Width x Depth) (mm): 1,790 x 912 x 738

Finish



OVEN

BOSCH®

EAN: Model 4242002812854 Oven

These ovens include a wide variety of functions and innovative ideas and that is why, although they are compact, there are no limits when it comes to the reachable possibilities they offer.

Location
Kitchen

Quantity: 1



Features

Folding Opening

Concealable Controls

Interior Lighting

Type of Construction: Integrated

Cleaning System: Pyrolytic program

Capacity (L): 57

Energy Efficiency Classification (2010/30/EC) : A

Measurements (Height x Width x Depth) (mm): 595 x 595 x 515

Finish





MICROWAVE

LG®
MH6535GDS Model Microwave

It combines the best of the microwave with the Smart Inverter technology.
Easy-cleaning antibacterial interior.

Location
Kitchen

Quantity 1



Features

Electronic Display With Time Indicator

Capacity: 25 litres.

5 Levels Of Power: Maximum 1000 W.

Grill: 900 W.

Rotatory Plate Diameter (cm): 29.2

Measurements (Height x Width x Depth) (mm): 272 x 476 x 388

Finish



INDUCTION STOVETOP

BOSCH®

EAN: 4242002845043 Model Touch Control Easy Induction Stovetop

This induction stovetop with its 5 induction zones incorporates the newest functions and features in the market.



Location
Kitchen

Quantity: 1



Features

5 Induction Zones

1 Double Zone: 18 cm/12 cm

1 Double Zone: 23 cm/18 cm

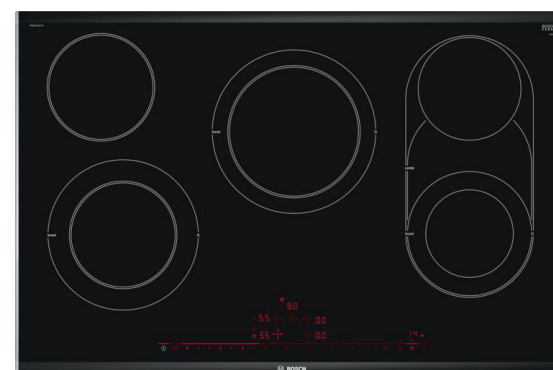
1 Double Zone: 21 cm/15 cm

2 Zones: 15 cm

N° of positions that can be used at the same time: 5

Measurements (width x depth) (cm): 4.4 x 81.6 x 52.7

Finish





INTEGRATED DISHWASHER

NEFF

EAN: Model 4242004175735 Completely Integrated Dishwasher

NEFF dishwashers' multiple functions are prepared to help you with everything, with an impeccable result. Its dishwasher line is available in two sizes - 60 cm or 45 cm - to adapt to your needs and your kitchen size.

Their integrated dishwashers remain invisible between your kitchen furniture and they have a hidden control panel on top of the door. Thanks to the OpenAssist opening system you do not even need a handle. You just have to slightly push the door to open it.

Quantity: 1



Location
Kitchen

Features

EfficientDrive® Engine

Digital Display

TimeLight: Wash Programme Visualization

AquaSensor®: Automatic Operation

AquaStop®

10-year Warranty

Energy Efficiency Class (2010/30/EC) : A++

Measurements (Height x Width x Depth) (mm): 865 x 598 x 550

Finish



LIGHTING

NIESSEN
ZENIT Line
Switches/Plugs

Zenit is the most complete line for all types of residential and tertiary installations. An appreciated design and a beautiful finishing line that adds value to the installations, with advanced features that add comfort and a high level of performance.

Three types of finishes are offered: White, Silver and Anthracite.



Features

Switches:

- Intensity (A): 16
- Voltage (V): 250
- Optional LED lighting

Plugs:

- Intensity (A): 16
- Voltage (V): 250
- Security System That Prevents Unintentional Direct Contact
- Complete Mechanism

TV installation:

- Type F - 750 Ohms
- Threaded Connector

Finishes



LIGHTING

BPMLighting®
 MINI CATLI Luminaire
 Interior Lighting

BPMLighting® Mini Catli round recessed lighting manufactured in white aluminum. It has a tilting and swivelling light system. The ease of installation and bulb changing is remarkable. Suitable for LED bulbs (lamp holder GU10 included)



Features

Colour temperature (°K): 3000
 Reflector: 40°
 Power (W): 10
 Protection Class: II
 Lamp: LED BPM300
 Energy Efficiency: A +
 Diameter (mm): Ø 92
 Height (mm): 88
 Degrees Tilting: 45°
 Degrees Swivel: 350°

Finishes

White Matte



Gold



Brushed Aluminum



LIGHTING



BPMLighting®
SU Classic luminaire
Interior Lighting

BPMLighting® SU Classic R150Ø LED round recessed lighting manufactured in white aluminum. It is a fixed lighting system. The ease of installation and bulb changing is remarkable. Suitable for LED bulbs (lamp holder GU10 included).

LED Strips. Dimable LEDs Lines. 3000°K



Features

- Colour Temperature (°K): 3000
- Reflector: 40°
- Regulation: With regulation
- Power (W): 10
- Protection Class: II
- Lamp: LED BPM300
- Energy Efficiency: A +
- Diameter (mm): Ø 85
- Height (mm): 79

Elements

LEDs Strips

Matte White





HEATING & COOLING

SAMSUNG®

VRF system with heat pump.

Maximum efficiency. Samsung's DVM S Variable Flow System has been developed to deliver high quality, energy efficient operation.

Samsung DVM S air conditioners are highly efficient thanks to their Dual Inverter Compressor with Steam Injection. This compressor cools or heats the space quickly and efficiently, using less energy in the process. They also include an operations control system that dramatically reduces the noise level. Quiet operation is guaranteed for 12 hours, so users perform at their best.

The indoor units are composed of a slim duct air conditioner is designed to facilitate assembly and simplify maintenance. DVM model.



Features

Outdoor unit @Samsung brand DVM S Eco range, power 8 HP. Nominal cooling / heating capacity: 22.4 / 25.2 kW. Power consumption 9.5 / 11.7kW. With Propeller / BLDC fan air flow 135 m³ / min.

@Samsung indoor units, medium pressure ducts model, with condensate pump included. Nominal cooling / heating capacity: 11.2 / 12.5 kW. Energy consumption 260/260 W.

ACS Sime Ecomaxi 260 ErP heat pump. Vitrified steel accumulator, 600x2000mm, thermal power 1820kW, 260L capacity.

@Wilco brand DHW return pump, Stratos Pico-Z 25 / 1-6 model.

Controlled by @Samsung brand thermostats, with LCD screen.

Elements

Outdoor Unit



Indoor Units
DVM Slim



Thermostat MWR-WE13N





UNDERFLOOR HEATING

DRY SYSTEM POLYTHERM®

Underfloor heating. 29mm dry system.

The system is the most suitable for houses with wooden floors because it only weighs 8 Kgr/m² and occupies 29mm + paving (approximately 4 cm)

It can be installed on the existing floor and does not need mortar with floating floors.

Formed by an insulating plate thermoformed with metal diffusers to increase the heat input. Multilayer tube, inserted into the channel of the diffusers as an emitting element.



Features

DRY SYSTEM DE @POLYTHERM

Trocken29Z high-density polystyrene plate 29 mm thick, with channels for the installation of pipes on diffusers.

Polyethylene film placed under the insulation board.

Metal diffuser (for floor without mortar)

Metal plate 1000x660x0.5 mm, for load distribution.

Conduits: Laserflex 16x2 mm multilayer tube

Insulating perimeter strip, 15 cm.

HKV drive manifolds with built-in electrically operated valves, 7 circuits.

Elements

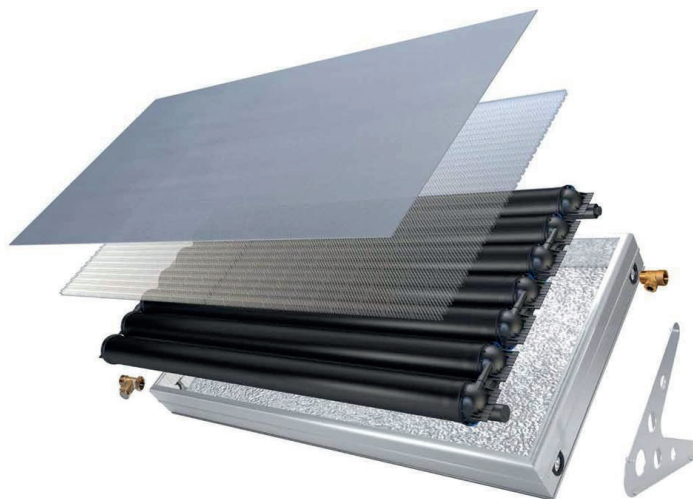
Collectors



Pipes



RENEWABLE ENERGY



Hot water
SOLCRAFTE® STYLE PLUS 200 LITERS
Thermal solar kit

New and revolutionary solar hot water production system. Its dimensions and weight are half that of conventional thermosiphon systems, while being very profitable due to the large amount of energy costs it saves.

With Solcrafte® Style, solar energy can be used more efficiently for the production of domestic hot water than with conventional thermosiphon systems. It is the first compact system with an integrated domestic hot water tank suitable for different demands.

The collector has a built-in accumulator directly, so that domestic hot water is not produced by a heat exchanger. The domestic water is heated directly when solar radiation reaches the equipment. This is a quick process that allows the water to always be fresh and hygienically clean.



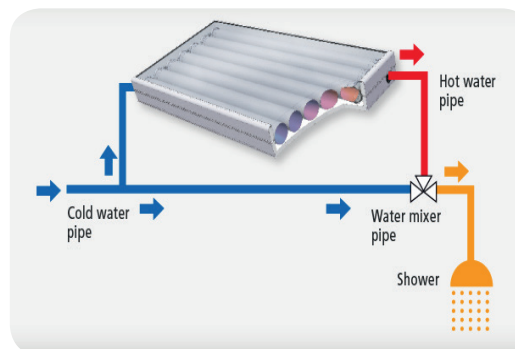
Features

SOLAR ENERGY SOLCRAFTE PLUS 200.
Total collector area 1.75 m².
Capacity 195 l.
Max temperature 95 ° C, Max pressure 4 bar.
2x3 / 4 male connections.
Insulation 30 mm Polyurethane foam.
Dimensions 2184x1100x212 mm and weight 75 kg.

Heat pump Sanitary hot water SIME ECOMAXI 260 ERP.
Vitrified steel accumulator, 600x2000mm, thermal power 1820kW,
260L capacity.

Elements

Scheme



Heat pump ACS Sime Ecomaxi 260 ErP

