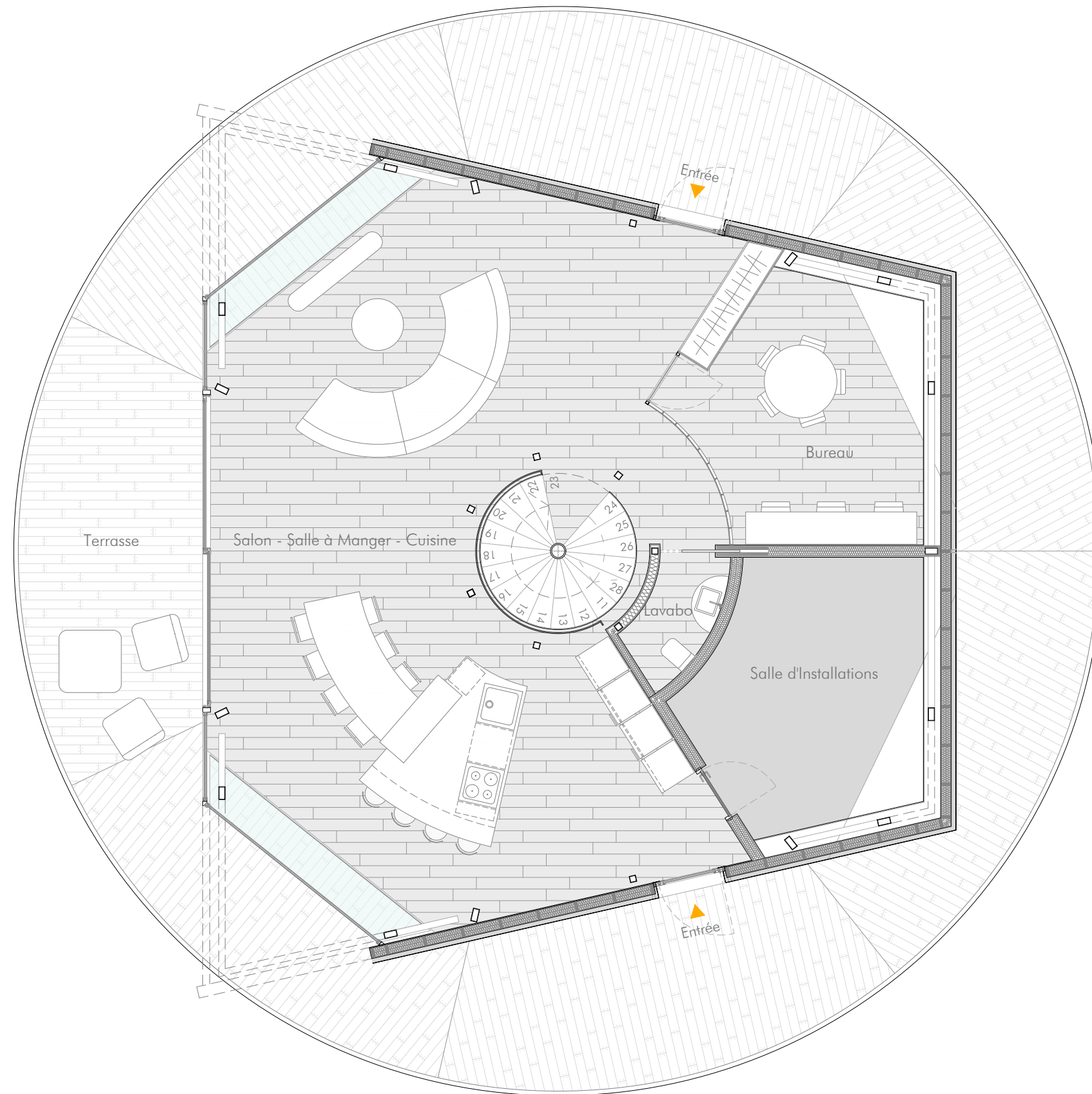
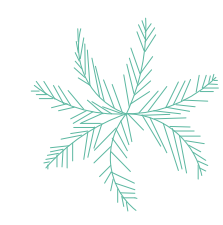
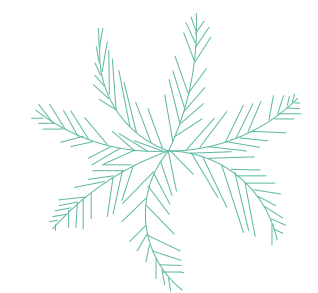
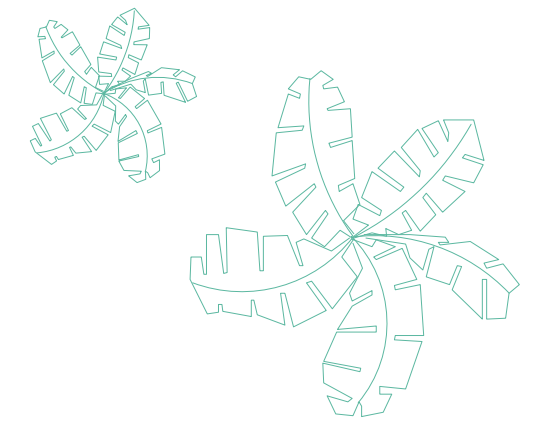


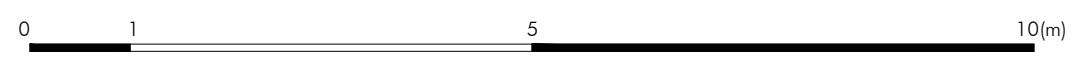
SH URBAN

RDC



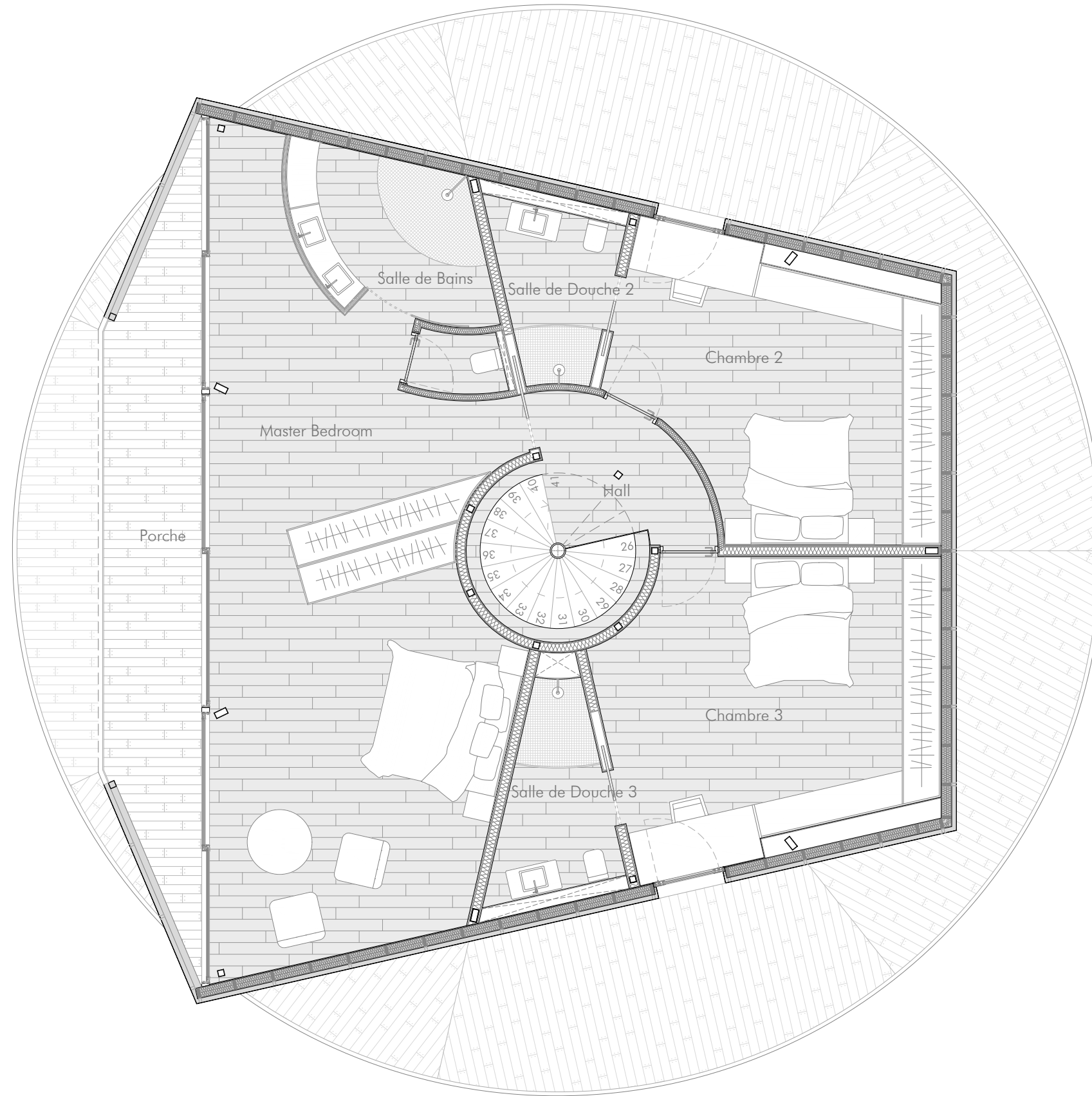
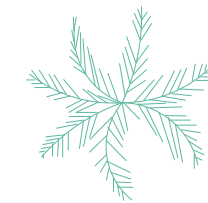
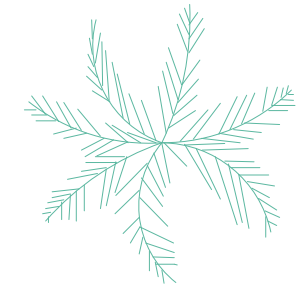
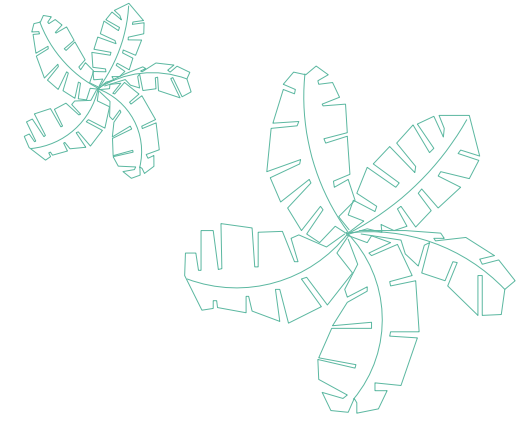
SURFACES INTÉRIEURES HABITABLES RDC	
Salon-Salle à Manger-Cuisine	69.62
Bureau	12.06
Salle d'Installations	12.12
Lavabo	2.20
Esc. Central	4.50
TOTAL	100.50

SURFACES EXTÉRIEURES RDC	
Terrasse	107.50
TOTAL	107.50



SH URBAN

PREMIER ÉTAGE



SURFACE INTÉRIEURE HABITABLE PREMIER ÉTAGE	
Master Bedroom + Salle de bains	53.16
Hall	5.44
Chambre 2	19.26
Salle de Douche 2	4.18
Chambre 3	21.88
Salle de Douche 3	4.94
TOTAL	108.86

SURFACE EXTÉRIEURE PREMIER ÉTAGE	
Porche	15.00
TOTAL	15.00

